



Figure J1.1

**20% AEP
Pipe capacity**

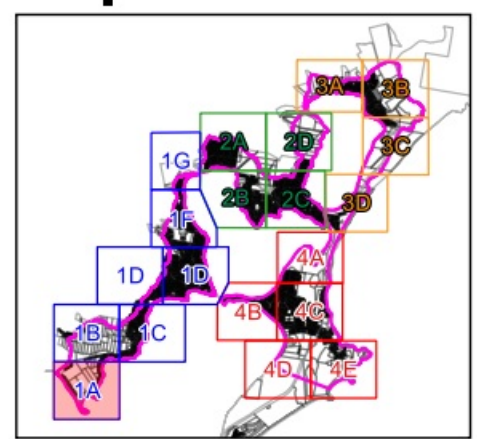
Legend

- Catchment area
- Cadastre

Pipe Percentage Full

- 0% - 20%
- 20% - 40%
- 40% - 60%
- 60% - 80%
- 80% - 100%

Map 1A



Report MHL2571

Northern Lakes Floodplain
Risk Management Study &
Plan





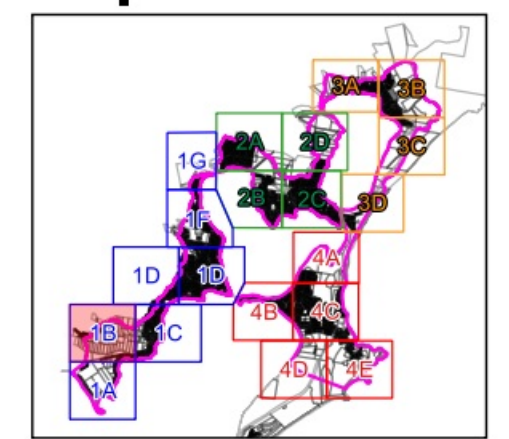
Figure J1.2

**20% AEP
Pipe capacity**

- Legend**
- Catchment area
 - Cadastre

- Pipe Percentage Full**
- 0% - 20%
 - 20% - 40%
 - 40% - 60%
 - 60% - 80%
 - 80% - 100%

Map 1B



Report MHL2571
Northern Lakes Floodplain
Risk Management Study &
Plan



Figure J1.3

**20% AEP
Pipe capacity**

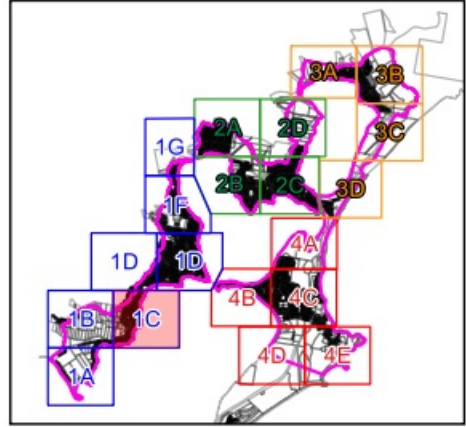
Legend

- Catchment area
- Cadastre

Pipe Percentage Full

- 0% - 20%
- 20% - 40%
- 40% - 60%
- 60% - 80%
- 80% - 100%

Map 1C



Report MHL2571

Northern Lakes Floodplain
Risk Management Study &
Plan



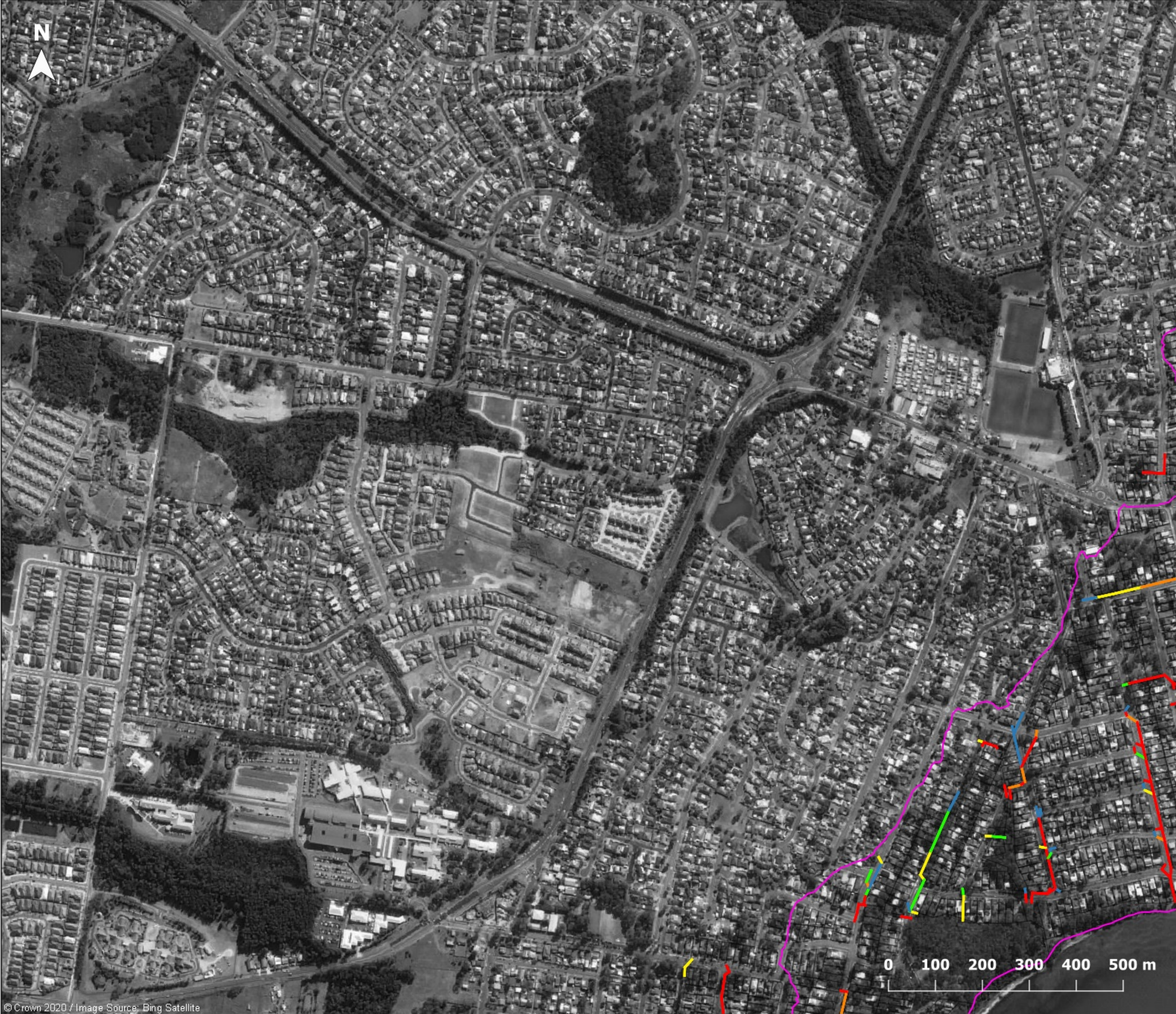


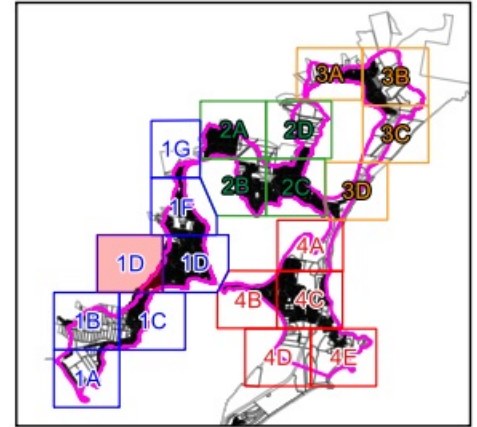
Figure J1.4

**20% AEP
Pipe capacity**

- Legend**
- Catchment area
 - Cadastre

- Pipe Percentage Full**
- 0% - 20%
 - 20% - 40%
 - 40% - 60%
 - 60% - 80%
 - 80% - 100%

Map 1D



Report MHL2571
Northern Lakes Floodplain
Risk Management Study &
Plan



© Crown 2020 / Image Source: Bing Satellite



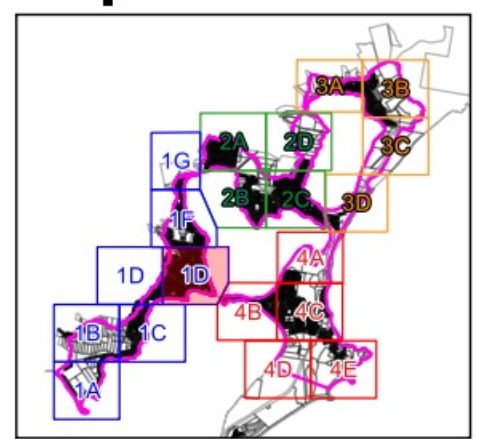
Figure J1.5

**20% AEP
Pipe capacity**

- Legend**
- Catchment area
 - Cadastre

- Pipe Percentage Full**
- 0% - 20%
 - 20% - 40%
 - 40% - 60%
 - 60% - 80%
 - 80% - 100%

Map 1D



Report MHL2571
Northern Lakes Floodplain
Risk Management Study &
Plan



© Crown 2020 / Image Source: Bing Satellite



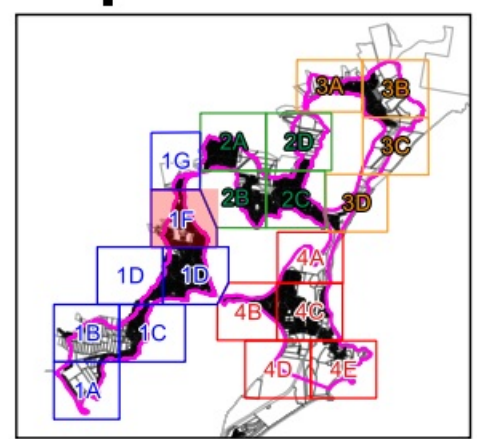
Figure J1.6

**20% AEP
Pipe capacity**

- Legend**
- Catchment area
 - Cadastre

- Pipe Percentage Full**
- 0% - 20%
 - 20% - 40%
 - 40% - 60%
 - 60% - 80%
 - 80% - 100%

Map 1F



Report MHL2571
 Northern Lakes Floodplain
 Risk Management Study &
 Plan

© Crown 2020 / Image Source: Bing Satellite



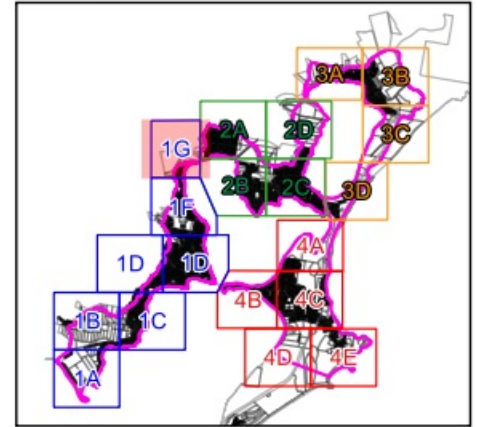
Figure J1.7

**20% AEP
Pipe capacity**

- Legend**
- Catchment area
 - Cadastre

- Pipe Percentage Full**
- 0% - 20%
 - 20% - 40%
 - 40% - 60%
 - 60% - 80%
 - 80% - 100%

Map 1G



Report MHL2571
Northern Lakes Floodplain
Risk Management Study &
Plan



© Crown 2020 / Image Source: Bing Satellite



Figure J1.8

**20% AEP
Pipe capacity**

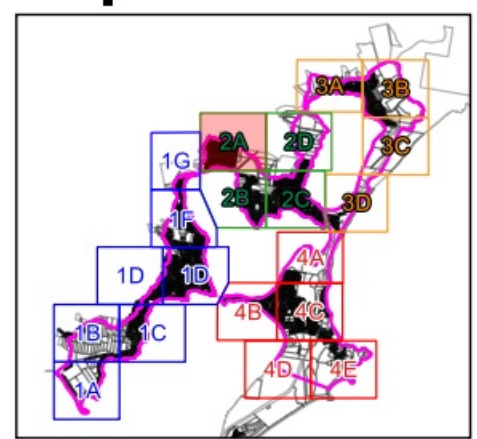
Legend

- Catchment area
- Cadastre

Pipe Percentage Full

- 0% - 20%
- 20% - 40%
- 40% - 60%
- 60% - 80%
- 80% - 100%

Map 2A



Report MHL2571

Northern Lakes Floodplain
Risk Management Study &
Plan



© Crown 2020 / Image Source: Bing Satellite

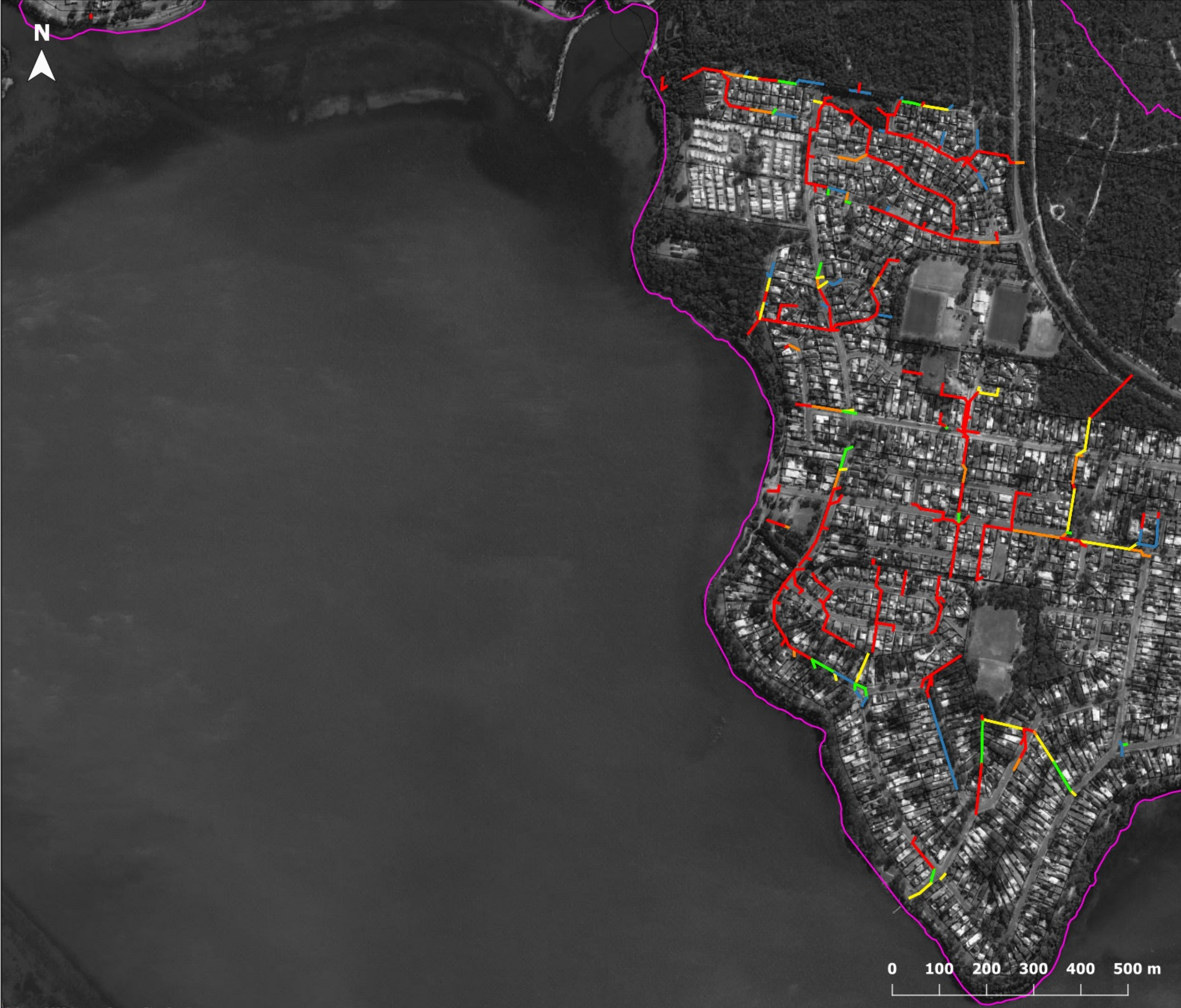


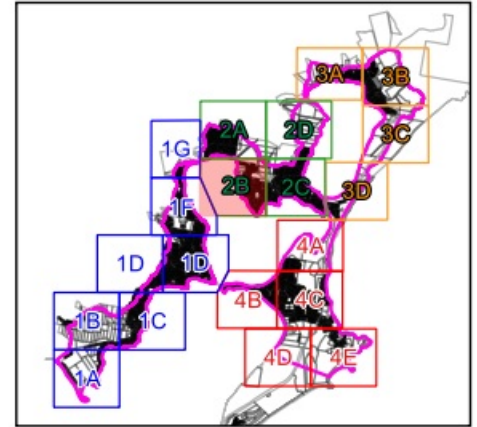
Figure J1.9

**20% AEP
Pipe capacity**

- Legend**
- Catchment area
 - Cadastre

- Pipe Percentage Full**
- 0% - 20%
 - 20% - 40%
 - 40% - 60%
 - 60% - 80%
 - 80% - 100%

Map 2B



Report MHL2571
Northern Lakes Floodplain
Risk Management Study &
Plan



© Crown 2020 / Image Source: Bing Satellite

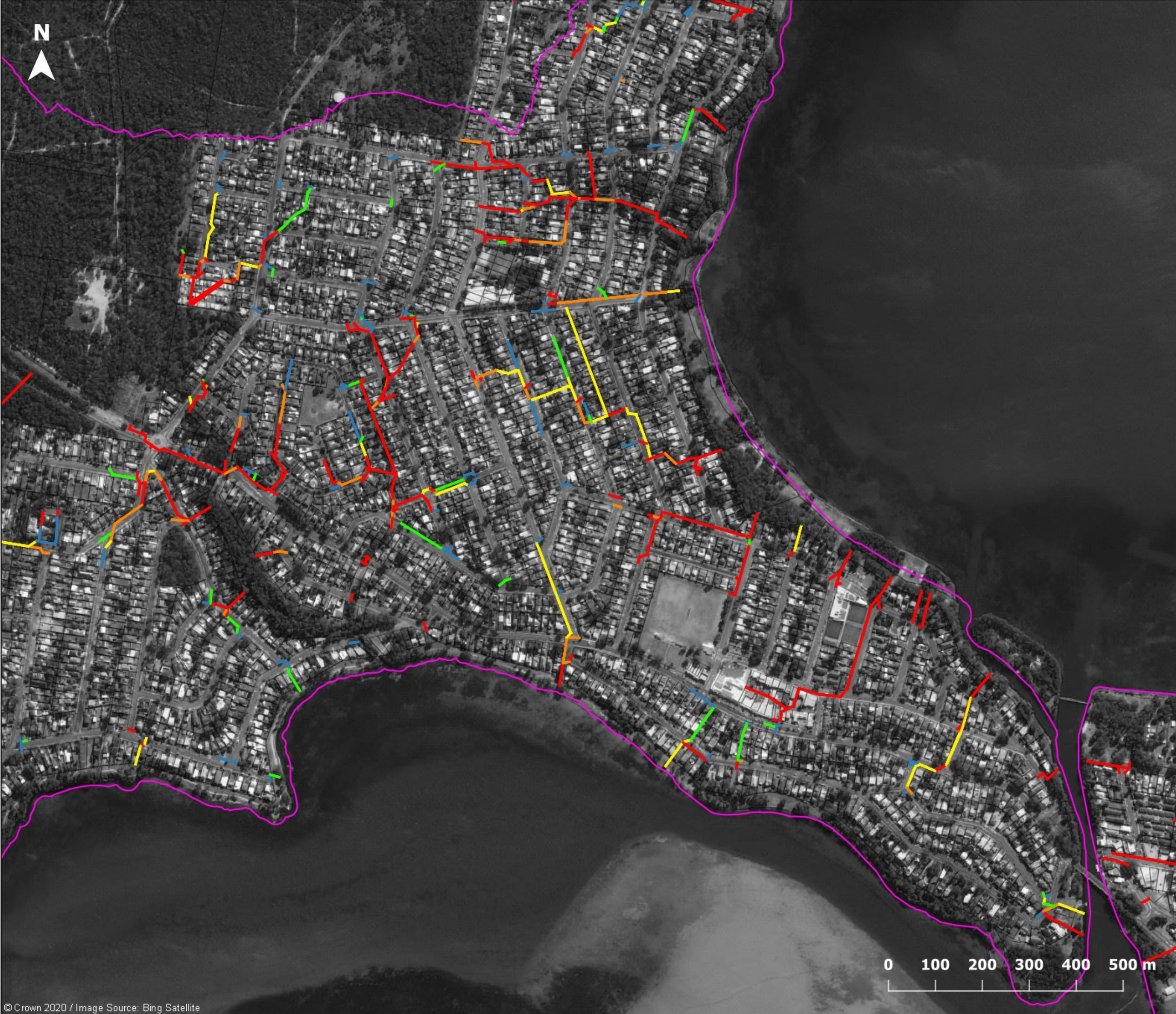


Figure J1.10

**20% AEP
Pipe capacity**

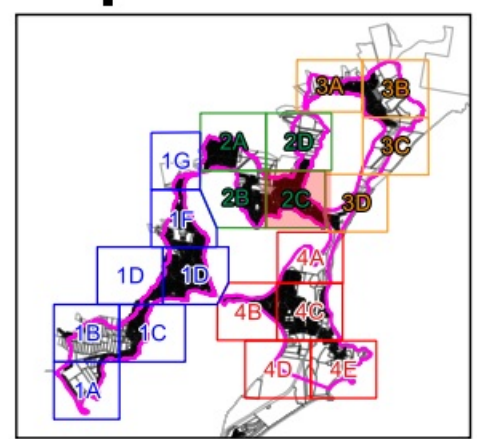
Legend

- Catchment area
- Cadastre

Pipe Percentage Full

- 0% - 20%
- 20% - 40%
- 40% - 60%
- 60% - 80%
- 80% - 100%

Map 2C



Report MHL2571

Northern Lakes Floodplain
Risk Management Study &
Plan





Figure J1.11

**20% AEP
Pipe capacity**

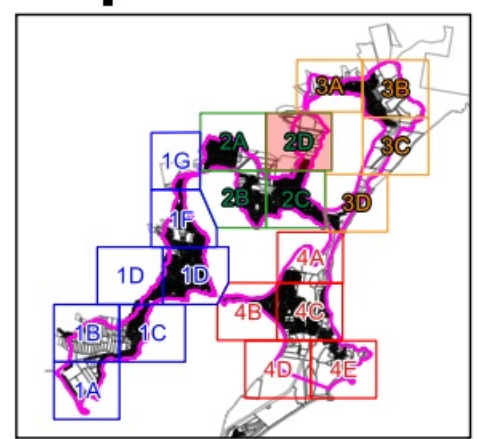
Legend

- Catchment area
- Cadastre

Pipe Percentage Full

- 0% - 20%
- 20% - 40%
- 40% - 60%
- 60% - 80%
- 80% - 100%

Map 2D



Report MHL2571

Northern Lakes Floodplain
Risk Management Study &
Plan



© Crown 2020 / Image Source: Bing Satellite



Figure J1.12

**20% AEP
Pipe capacity**

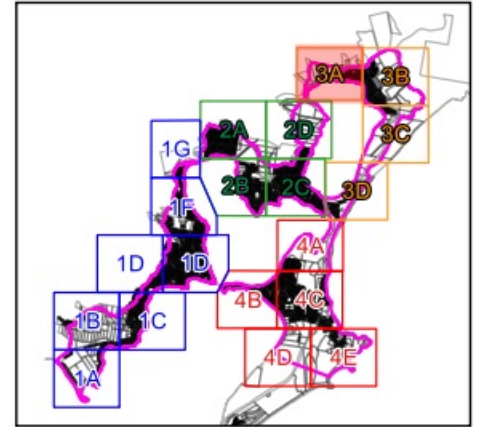
Legend

- Catchment area
- Cadastre

Pipe Percentage Full

- 0% - 20%
- 20% - 40%
- 40% - 60%
- 60% - 80%
- 80% - 100%

Map 3A



Report MHL2571

Northern Lakes Floodplain
Risk Management Study &
Plan



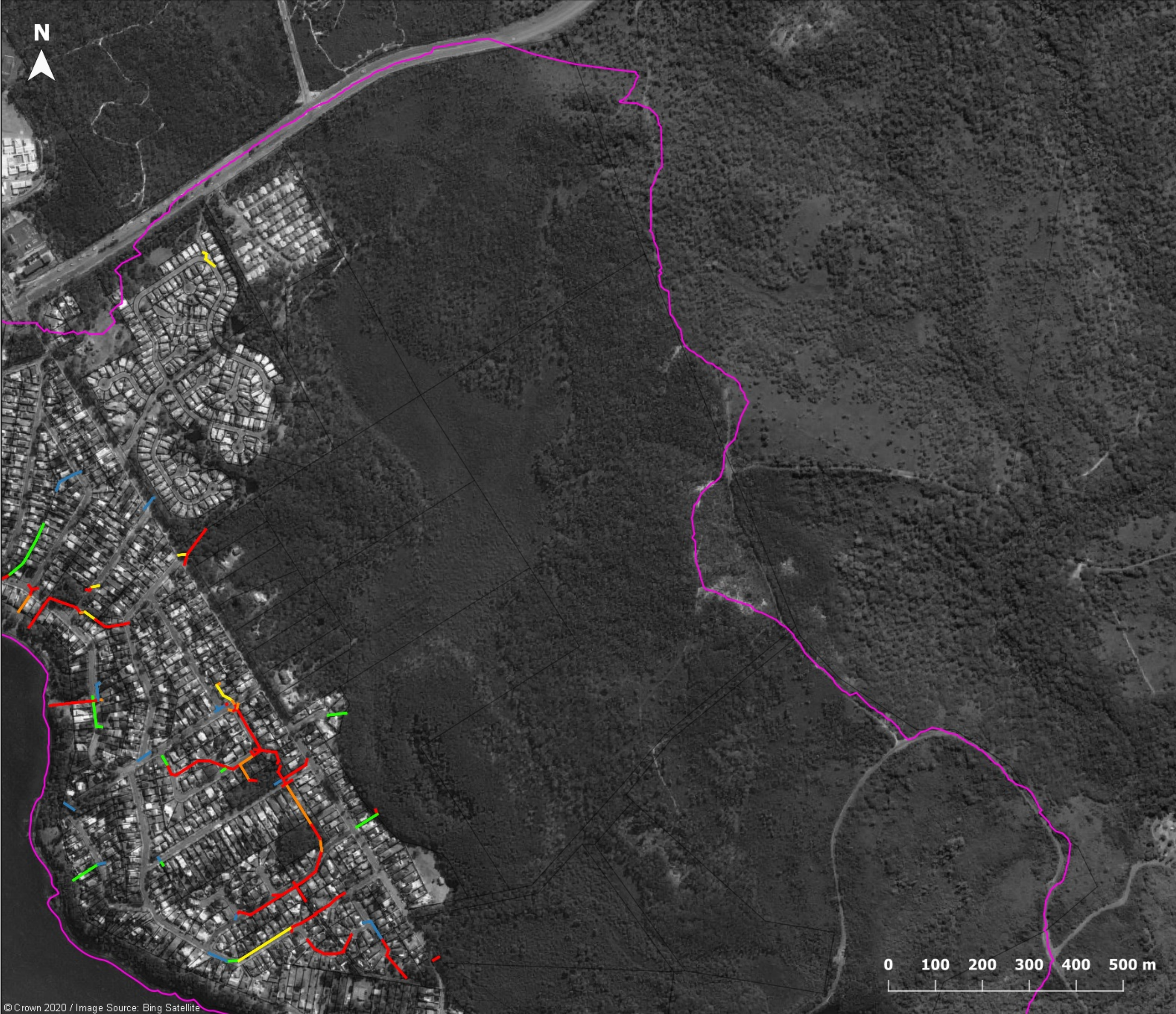


Figure J1.13

**20% AEP
Pipe capacity**

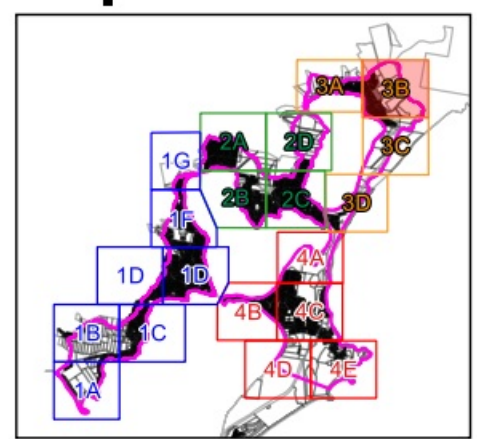
Legend

- Catchment area
- Cadastre

Pipe Percentage Full

- 0% - 20%
- 20% - 40%
- 40% - 60%
- 60% - 80%
- 80% - 100%

Map 3B



Report MHL2571

Northern Lakes Floodplain
Risk Management Study &
Plan





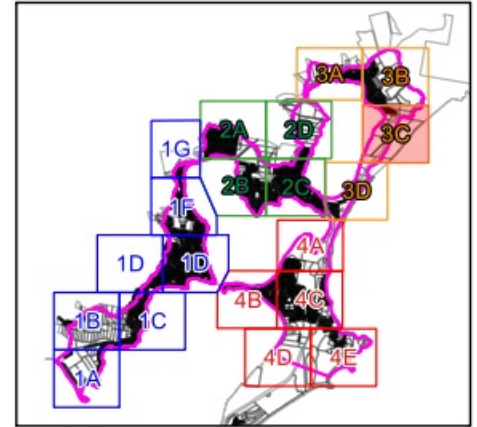
Figure J1.14

**20% AEP
Pipe capacity**

- Legend**
- Catchment area
 - Cadastre

- Pipe Percentage Full**
- 0% - 20%
 - 20% - 40%
 - 40% - 60%
 - 60% - 80%
 - 80% - 100%

Map 3C



Report MHL2571
 Northern Lakes Floodplain
 Risk Management Study &
 Plan










Figure J1.15

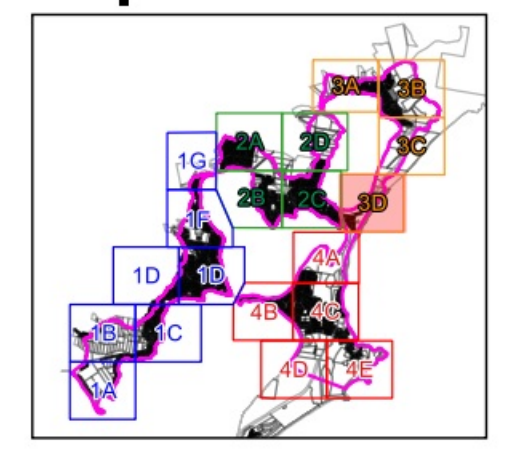
**20% AEP
Pipe capacity**

- Legend**
-  Catchment area
 -  Cadastre

- Pipe Percentage Full**
-  0% - 20%
 -  20% - 40%
 -  40% - 60%
 -  60% - 80%
 -  80% - 100%



Map 3D



Report MHL2571
Northern Lakes Floodplain
Risk Management Study &
Plan



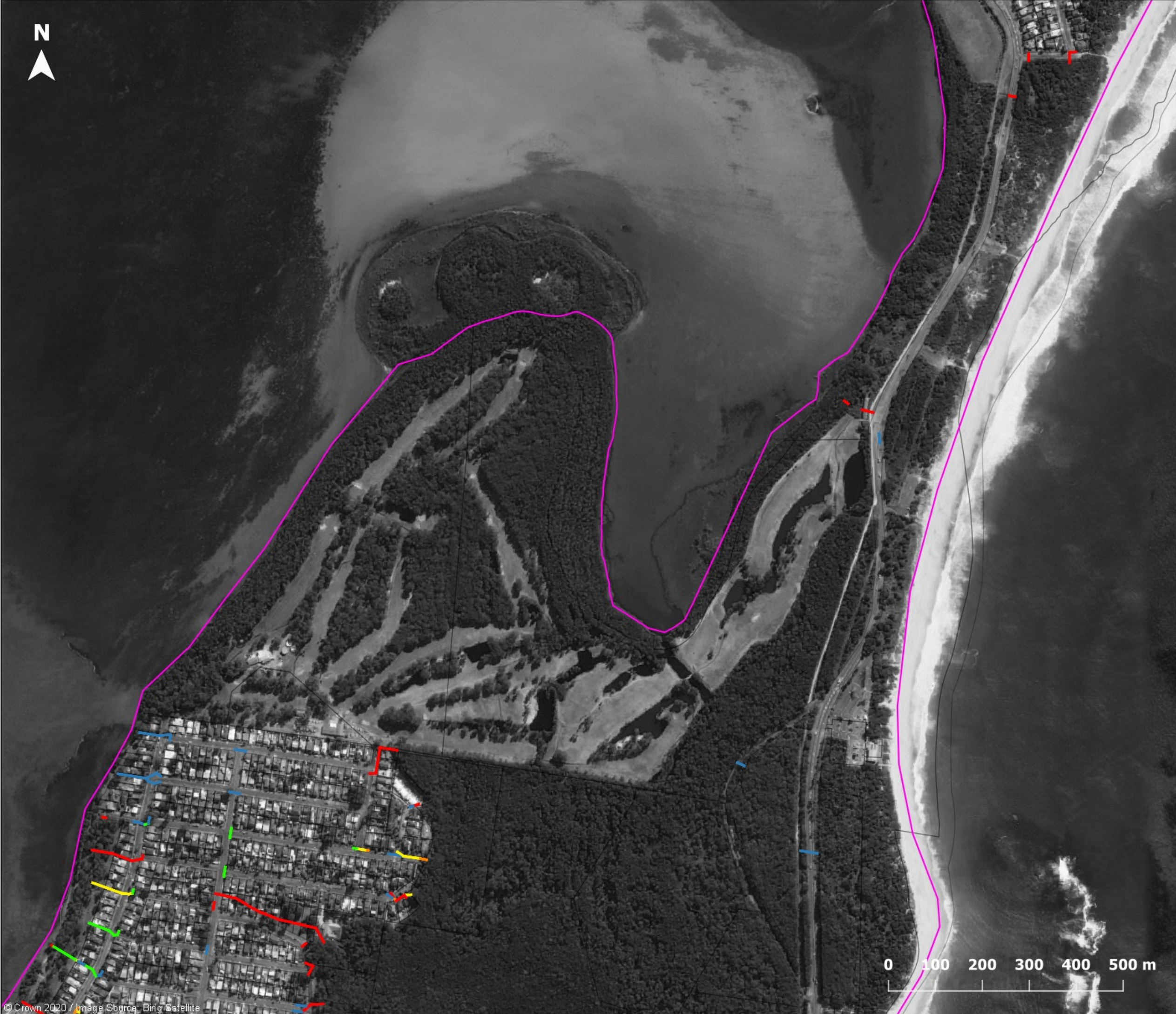


Figure J1.16

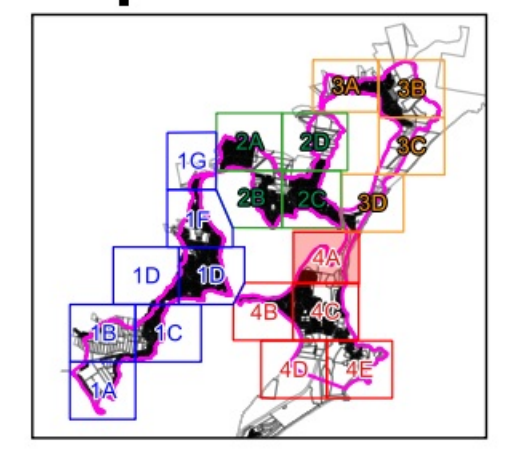
**20% AEP
Pipe capacity**

- Legend**
- Catchment area
 - Cadastre

- Pipe Percentage Full**
- 0% - 20%
 - 20% - 40%
 - 40% - 60%
 - 60% - 80%
 - 80% - 100%



Map 4A



Report MHL2571
Northern Lakes Floodplain
Risk Management Study &
Plan





Figure J1.17

**20% AEP
Pipe capacity**

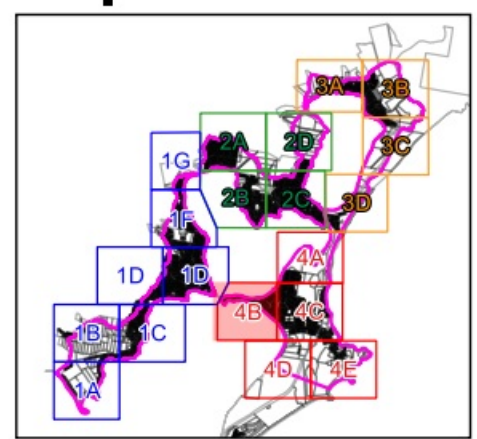
Legend

- Catchment area
- Cadastre

Pipe Percentage Full

- 0% - 20%
- 20% - 40%
- 40% - 60%
- 60% - 80%
- 80% - 100%

Map 4B



Report MHL2571

Northern Lakes Floodplain
Risk Management Study &
Plan



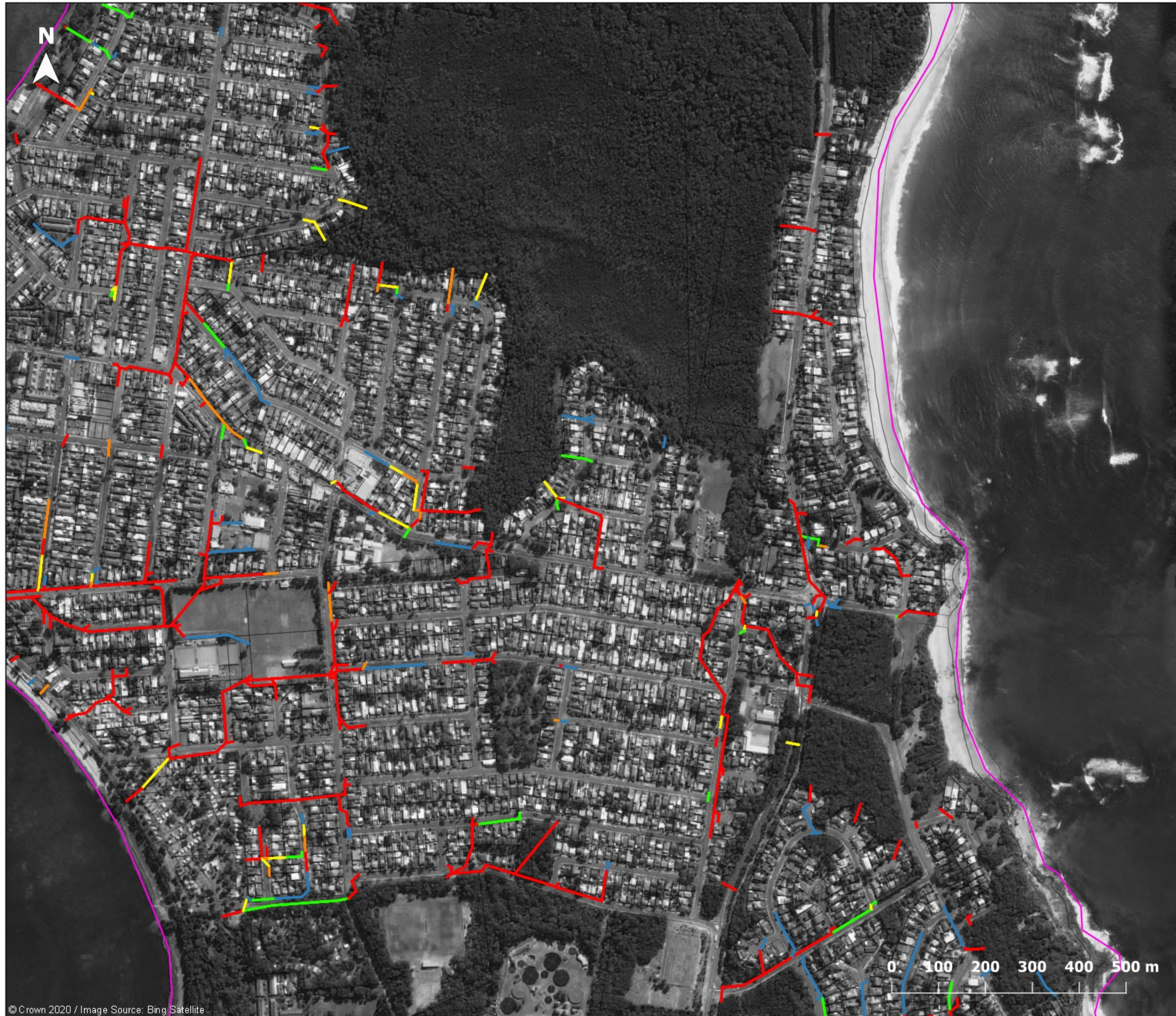


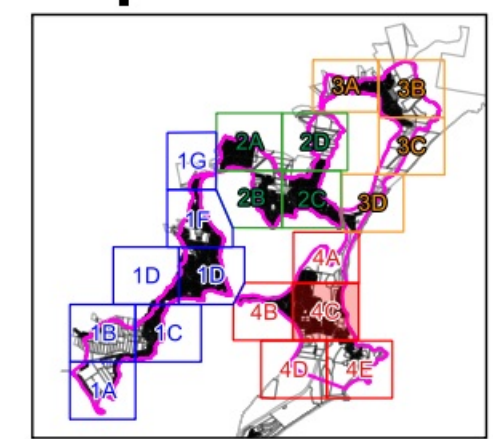
Figure J1.18

**20% AEP
Pipe capacity**

- Legend**
- Catchment area
 - Cadastre

- Pipe Percentage Full**
- 0% - 20%
 - 20% - 40%
 - 40% - 60%
 - 60% - 80%
 - 80% - 100%

Map 4C



Report MHL2571
Northern Lakes Floodplain
Risk Management Study &
Plan










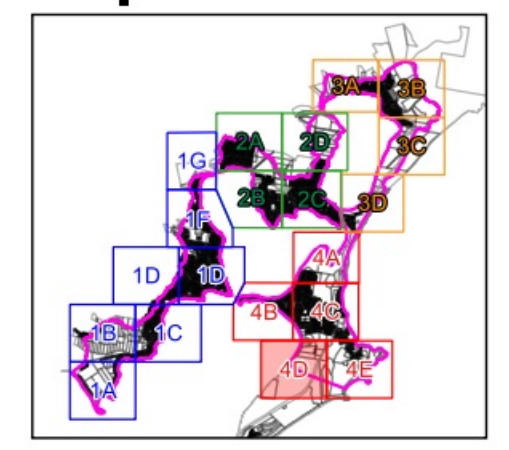
Figure J1.19

**20% AEP
Pipe capacity**

- Legend**
-  Catchment area
 -  Cadastre

- Pipe Percentage Full**
-  0% - 20%
 -  20% - 40%
 -  40% - 60%
 -  60% - 80%
 -  80% - 100%

Map 4D



Report MHL2571

Northern Lakes Floodplain
Risk Management Study &
Plan



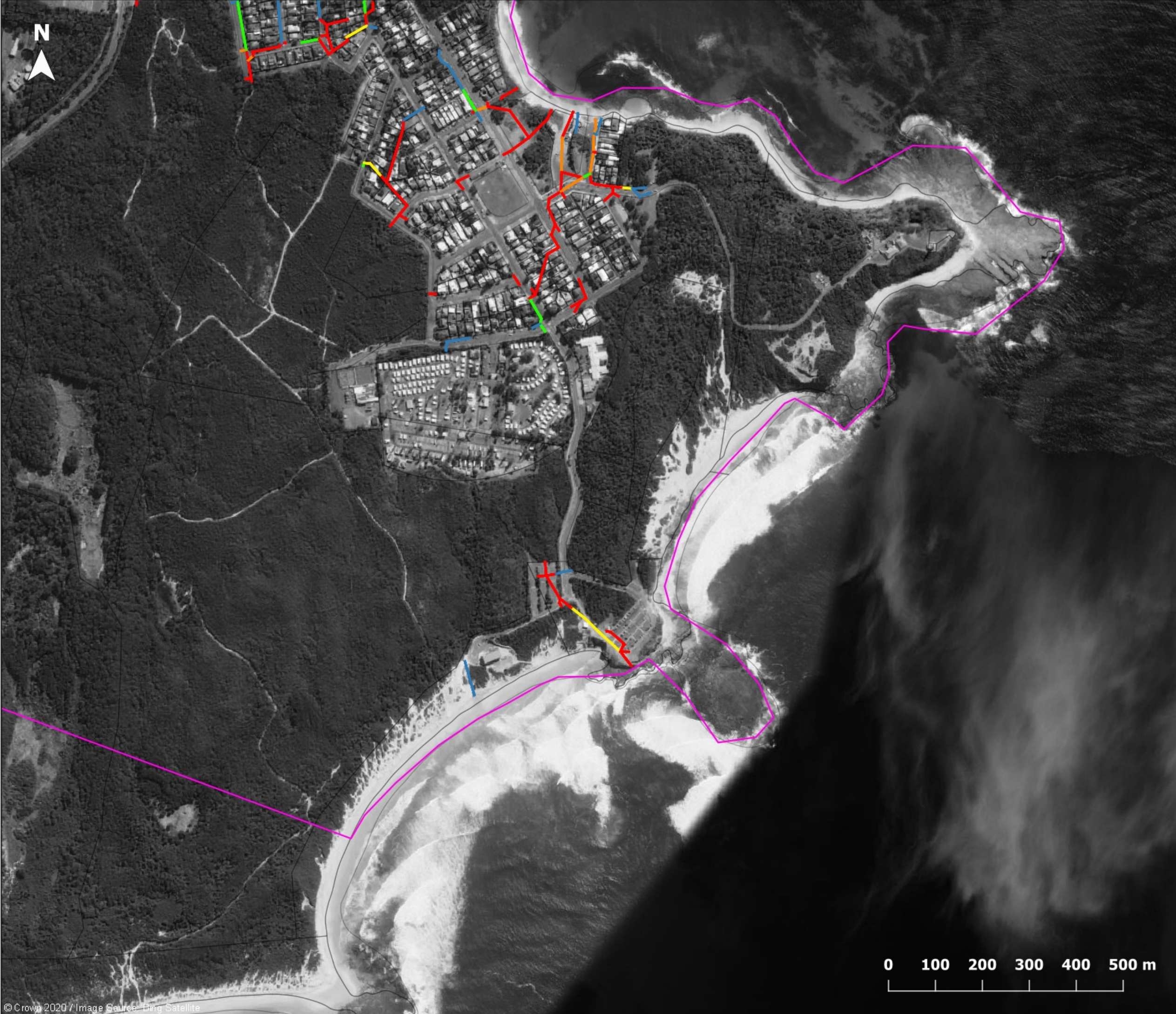


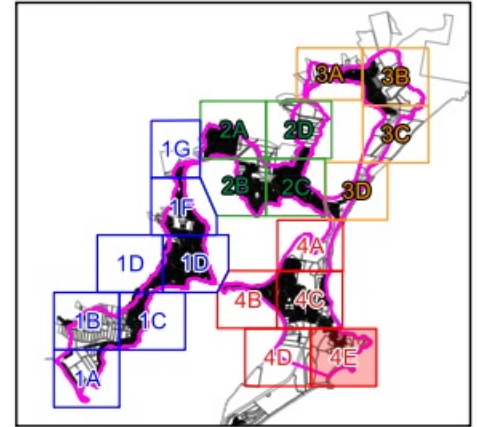
Figure J1.20

**20% AEP
Pipe capacity**

- Legend**
- ▭ Catchment area
 - ▭ Cadastre

- Pipe Percentage Full**
- 0% - 20%
 - 20% - 40%
 - 40% - 60%
 - 60% - 80%
 - 80% - 100%

Map 4E



Report MHL2571
Northern Lakes Floodplain
Risk Management Study &
Plan



© Crown 2020 / Image Source: Bing Satellite