



**Figure J2.1**

**5% AEP  
Pipe capacity**

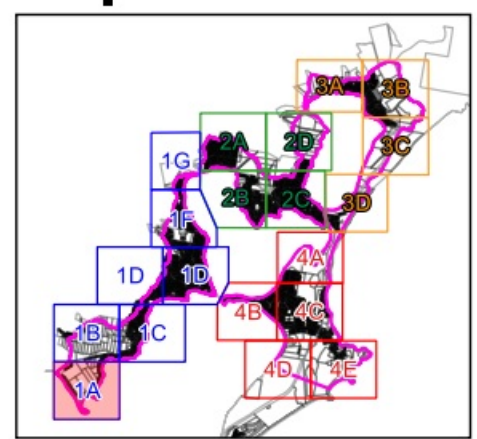
**Legend**

- Catchment area
- Cadastre

**Pipe Percentage Full**

- 0% - 20%
- 20% - 40%
- 40% - 60%
- 60% - 80%
- 80% - 100%

**Map 1A**



**Report MHL2571**

Northern Lakes Floodplain  
Risk Management Study &  
Plan





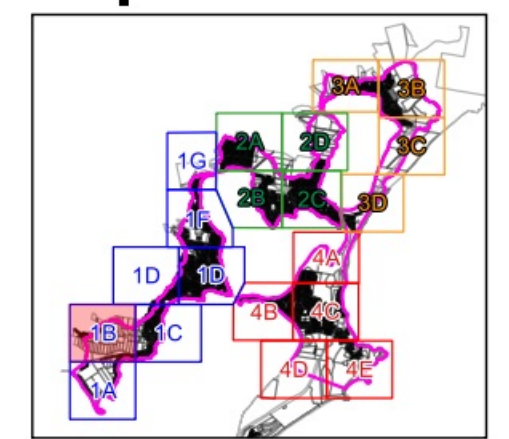
**Figure J2.2**

**5% AEP  
Pipe capacity**

- Legend**
- Catchment area
  - Cadastre

- Pipe Percentage Full**
- 0% - 20%
  - 20% - 40%
  - 40% - 60%
  - 60% - 80%
  - 80% - 100%

**Map 1B**



**Report MHL2571**  
Northern Lakes Floodplain  
Risk Management Study &  
Plan

© Crown 2020 / Image Source: Bing Satellite



**Figure J2.3**

**5% AEP  
Pipe capacity**

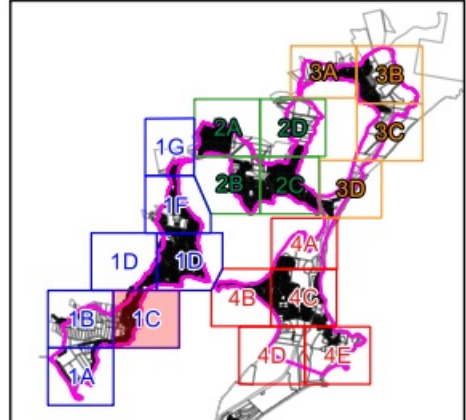
**Legend**

- Catchment area
- Cadastre

**Pipe Percentage Full**

- 0% - 20%
- 20% - 40%
- 40% - 60%
- 60% - 80%
- 80% - 100%

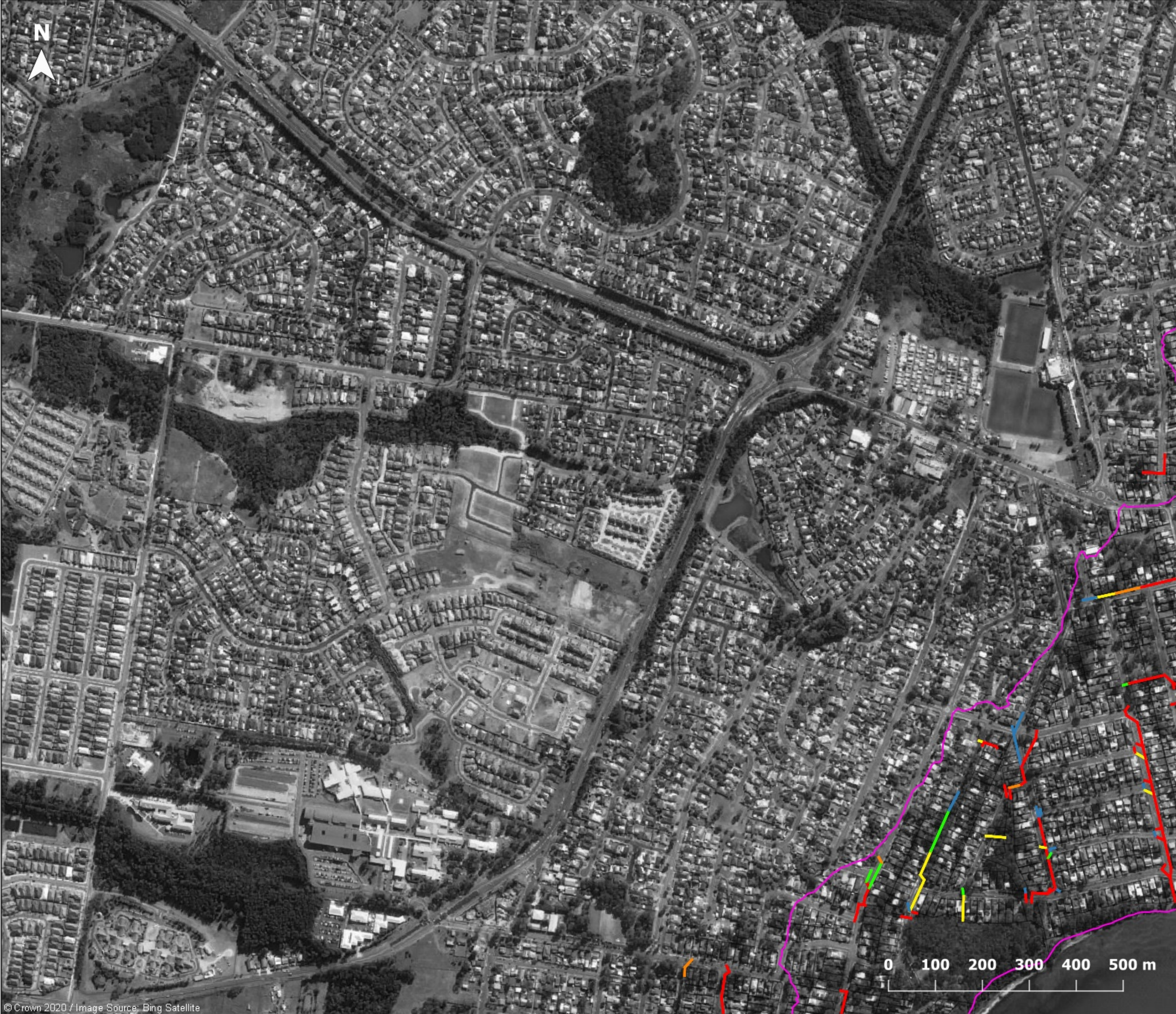
**Map 1C**



**Report MHL2571**

Northern Lakes Floodplain  
Risk Management Study &  
Plan





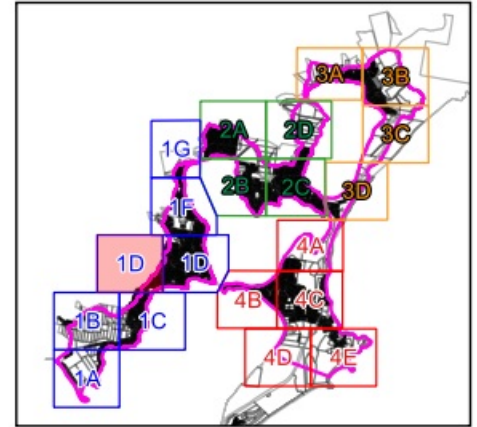
**Figure J2.4**

**5% AEP  
Pipe capacity**

- Legend**
- Catchment area
  - Cadastre

- Pipe Percentage Full**
- 0% - 20%
  - 20% - 40%
  - 40% - 60%
  - 60% - 80%
  - 80% - 100%

**Map 1D**



**Report MHL2571**  
Northern Lakes Floodplain  
Risk Management Study &  
Plan





© Crown 2020 / Image Source: Bing Satellite






**Figure J2.5**

**5% AEP  
Pipe capacity**

**Legend**

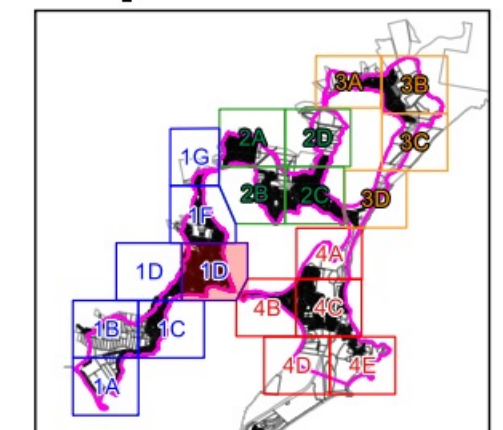
-  Catchment area
-  Cadastre

**Pipe Percentage Full**

-  0% - 20%
-  20% - 40%
-  40% - 60%
-  60% - 80%
-  80% - 100%



**Map 1D**



**Report MHL2571**

Northern Lakes Floodplain  
Risk Management Study &  
Plan





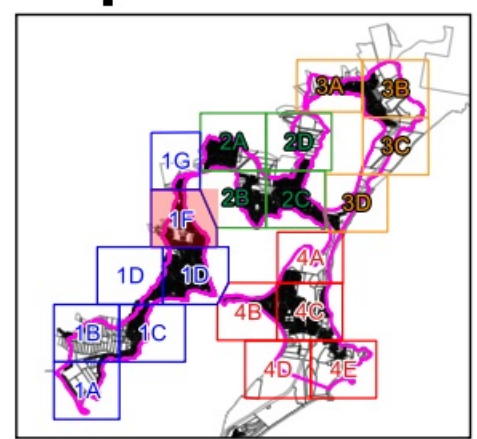
**Figure J2.6**

**5% AEP  
Pipe capacity**

- Legend**
- Catchment area
  - Cadastre

- Pipe Percentage Full**
- 0% - 20%
  - 20% - 40%
  - 40% - 60%
  - 60% - 80%
  - 80% - 100%

**Map 1F**



**Report MHL2571**  
Northern Lakes Floodplain  
Risk Management Study &  
Plan



© Crown 2020 / Image Source: Bing Satellite



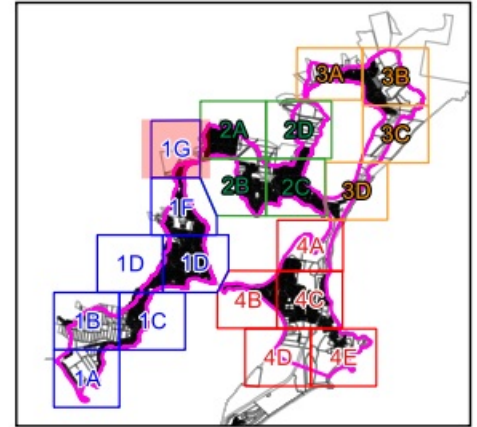
**Figure J2.7**

**5% AEP  
Pipe capacity**

- Legend**
- Catchment area
  - Cadastre

- Pipe Percentage Full**
- 0% - 20%
  - 20% - 40%
  - 40% - 60%
  - 60% - 80%
  - 80% - 100%

**Map 1G**



**Report MHL2571**  
 Northern Lakes Floodplain  
 Risk Management Study &  
 Plan



© Crown 2020 / Image Source: Bing Satellite



**Figure J2.8**

**5% AEP  
Pipe capacity**

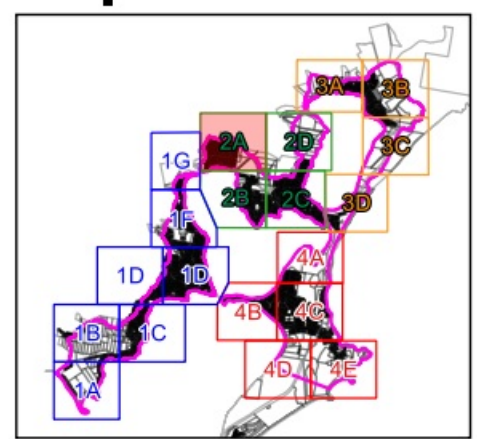
**Legend**

- Catchment area
- Cadastre

**Pipe Percentage Full**

- 0% - 20%
- 20% - 40%
- 40% - 60%
- 60% - 80%
- 80% - 100%

**Map 2A**



**Report MHL2571**

Northern Lakes Floodplain  
Risk Management Study &  
Plan



© Crown 2020 / Image Source: Bing Satellite





**Figure J2.9**

**5% AEP  
Pipe capacity**

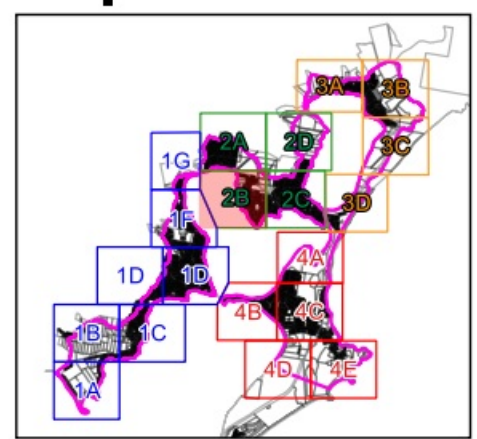
**Legend**

- Catchment area
- Cadastre

**Pipe Percentage Full**

- 0% - 20%
- 20% - 40%
- 40% - 60%
- 60% - 80%
- 80% - 100%

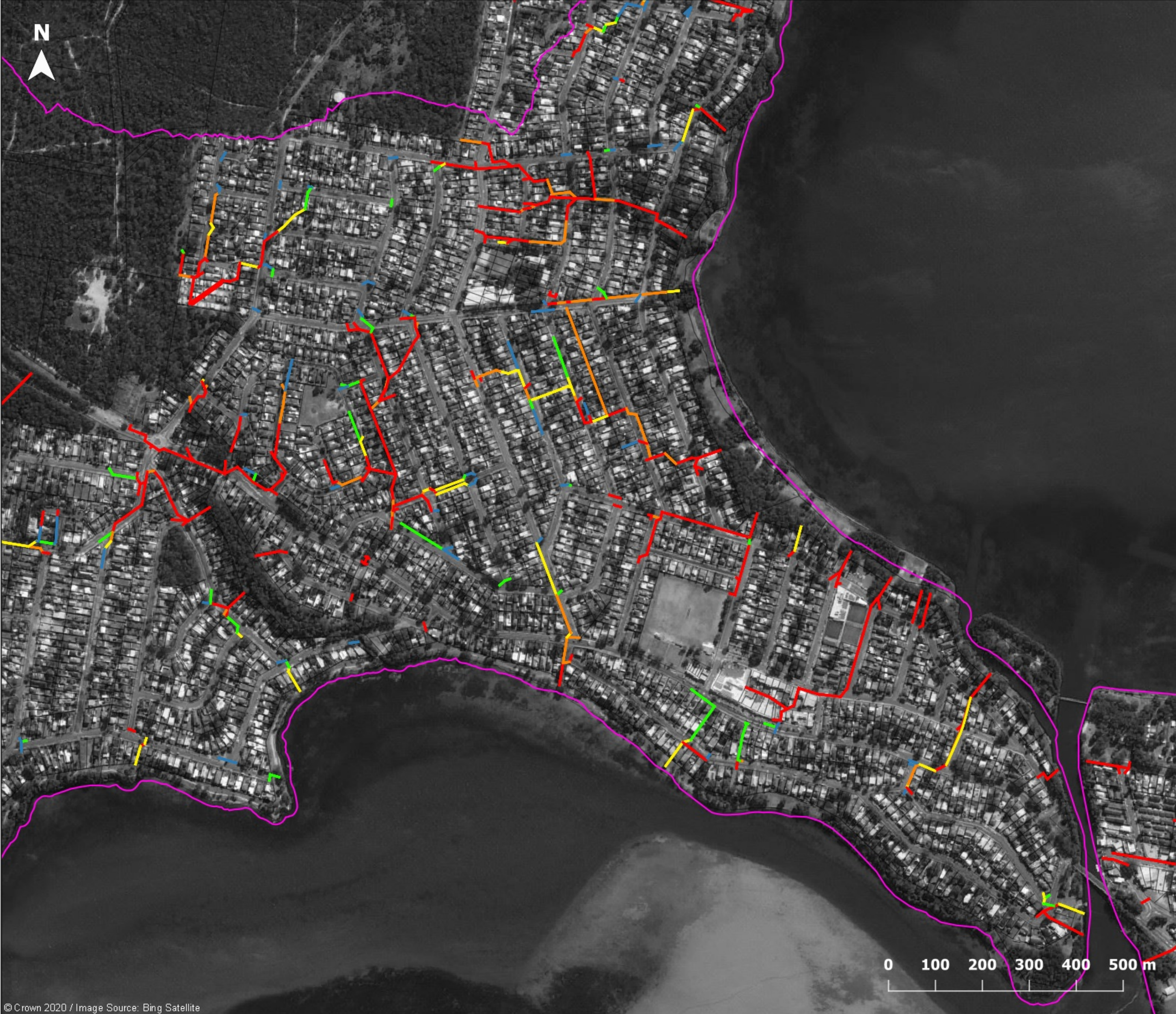
**Map 2B**



**Report MHL2571**

Northern Lakes Floodplain  
Risk Management Study &  
Plan





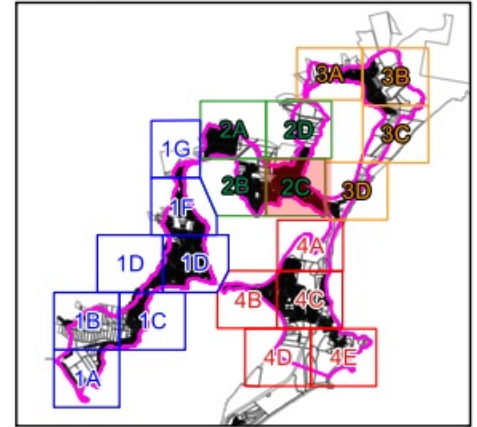
**Figure J2.10**

**5% AEP  
Pipe capacity**

- Legend**
- Catchment area
  - Cadastre

- Pipe Percentage Full**
- 0% - 20%
  - 20% - 40%
  - 40% - 60%
  - 60% - 80%
  - 80% - 100%

**Map 2C**



**Report MHL2571**  
Northern Lakes Floodplain  
Risk Management Study &  
Plan





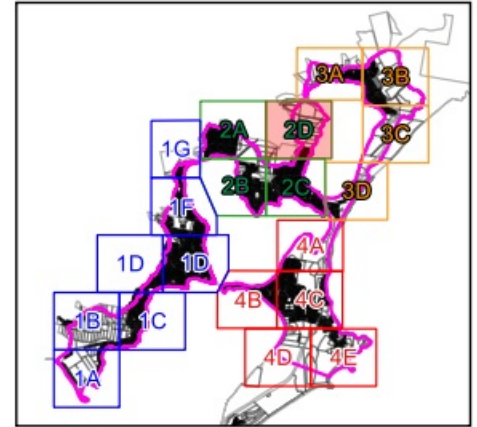
**Figure J2.11**

**5% AEP  
Pipe capacity**

- Legend**
- Catchment area
  - Cadastre

- Pipe Percentage Full**
- 0% - 20%
  - 20% - 40%
  - 40% - 60%
  - 60% - 80%
  - 80% - 100%

**Map 2D**



**Report MHL2571**  
Northern Lakes Floodplain  
Risk Management Study &  
Plan



© Crown 2020 / Image Source: Bing Satellite



**Figure J2.12**

**5% AEP  
Pipe capacity**

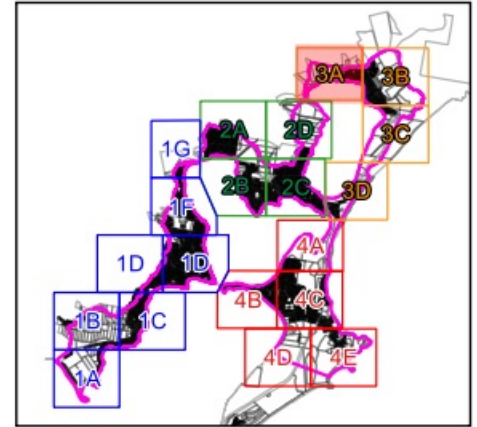
**Legend**

- Catchment area
- Cadastre

**Pipe Percentage Full**

- 0% - 20%
- 20% - 40%
- 40% - 60%
- 60% - 80%
- 80% - 100%

**Map 3A**



**Report MHL2571**

Northern Lakes Floodplain  
Risk Management Study &  
Plan



© Crown 2020 / Image Source: Bing Satellite



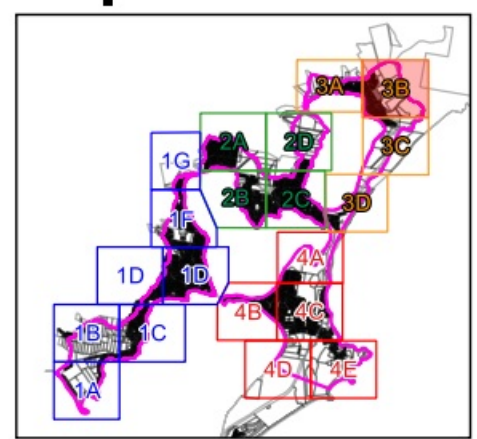
**Figure J2.13**

**5% AEP  
Pipe capacity**

- Legend**
- Catchment area
  - Cadastre

- Pipe Percentage Full**
- 0% - 20%
  - 20% - 40%
  - 40% - 60%
  - 60% - 80%
  - 80% - 100%

**Map 3B**



**Report MHL2571**  
Northern Lakes Floodplain  
Risk Management Study &  
Plan



© Crown 2020 / Image Source: Bing Satellite



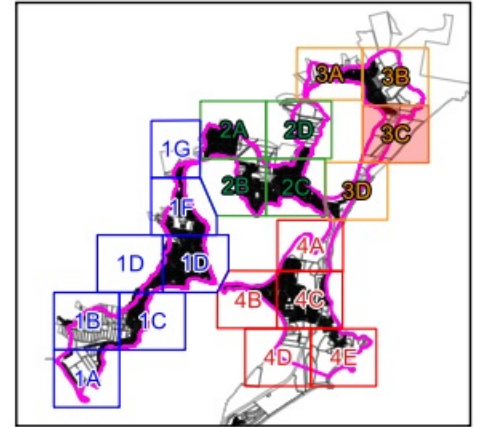
**Figure J2.14**

**5% AEP  
Pipe capacity**

- Legend**
- Catchment area
  - Cadastre

- Pipe Percentage Full**
- 0% - 20%
  - 20% - 40%
  - 40% - 60%
  - 60% - 80%
  - 80% - 100%

**Map 3C**



**Report MHL2571**  
 Northern Lakes Floodplain  
 Risk Management Study &  
 Plan








© Crown 2020 / Image Source: Bing Satellite



**Figure J2.15**

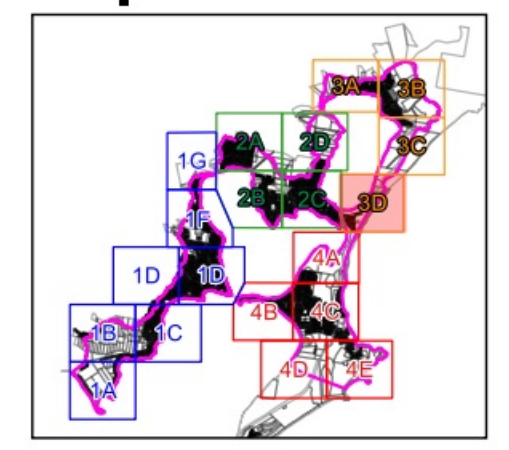
**5% AEP  
Pipe capacity**

- Legend**
-  Catchment area
  -  Cadastre

- Pipe Percentage Full**
-  0% - 20%
  -  20% - 40%
  -  40% - 60%
  -  60% - 80%
  -  80% - 100%



**Map 3D**



**Report MHL2571**

Northern Lakes Floodplain  
Risk Management Study &  
Plan








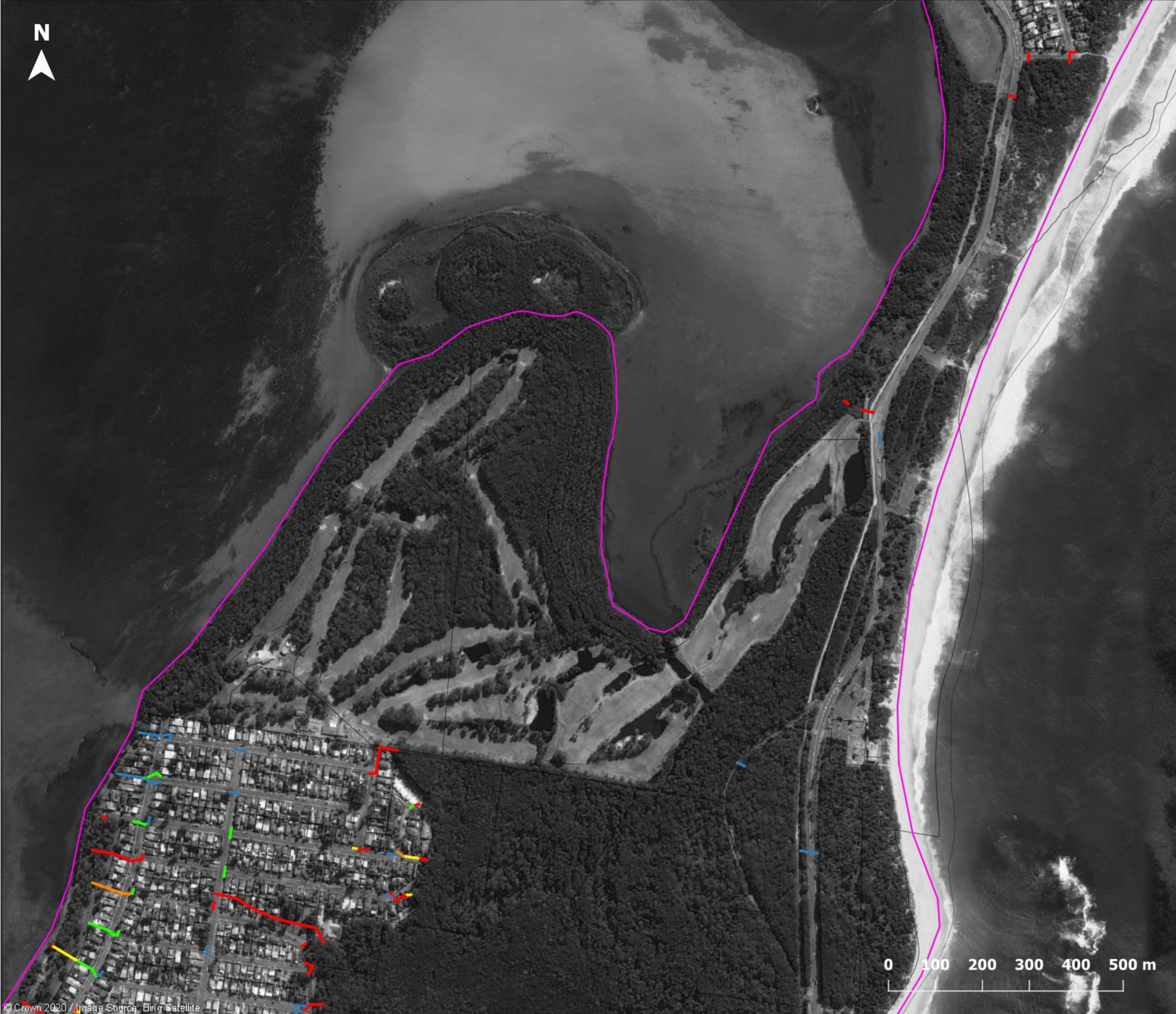


**Figure J2.16**

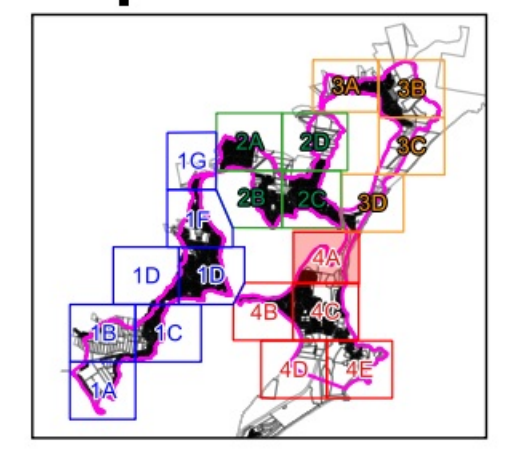
**5% AEP  
Pipe capacity**

- Legend**
-  Catchment area
  -  Cadastre

- Pipe Percentage Full**
-  0% - 20%
  -  20% - 40%
  -  40% - 60%
  -  60% - 80%
  -  80% - 100%



**Map 4A**



**Report MHL2571**  
Northern Lakes Floodplain  
Risk Management Study &  
Plan







**Figure J2.17**

**5% AEP  
Pipe capacity**

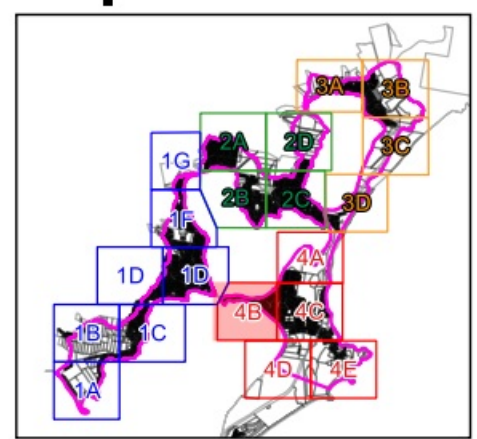
**Legend**

- Catchment area
- Cadastre

**Pipe Percentage Full**

- 0% - 20%
- 20% - 40%
- 40% - 60%
- 60% - 80%
- 80% - 100%

**Map 4B**



**Report MHL2571**



Northern Lakes Floodplain  
Risk Management Study &  
Plan








**Figure J2.18**

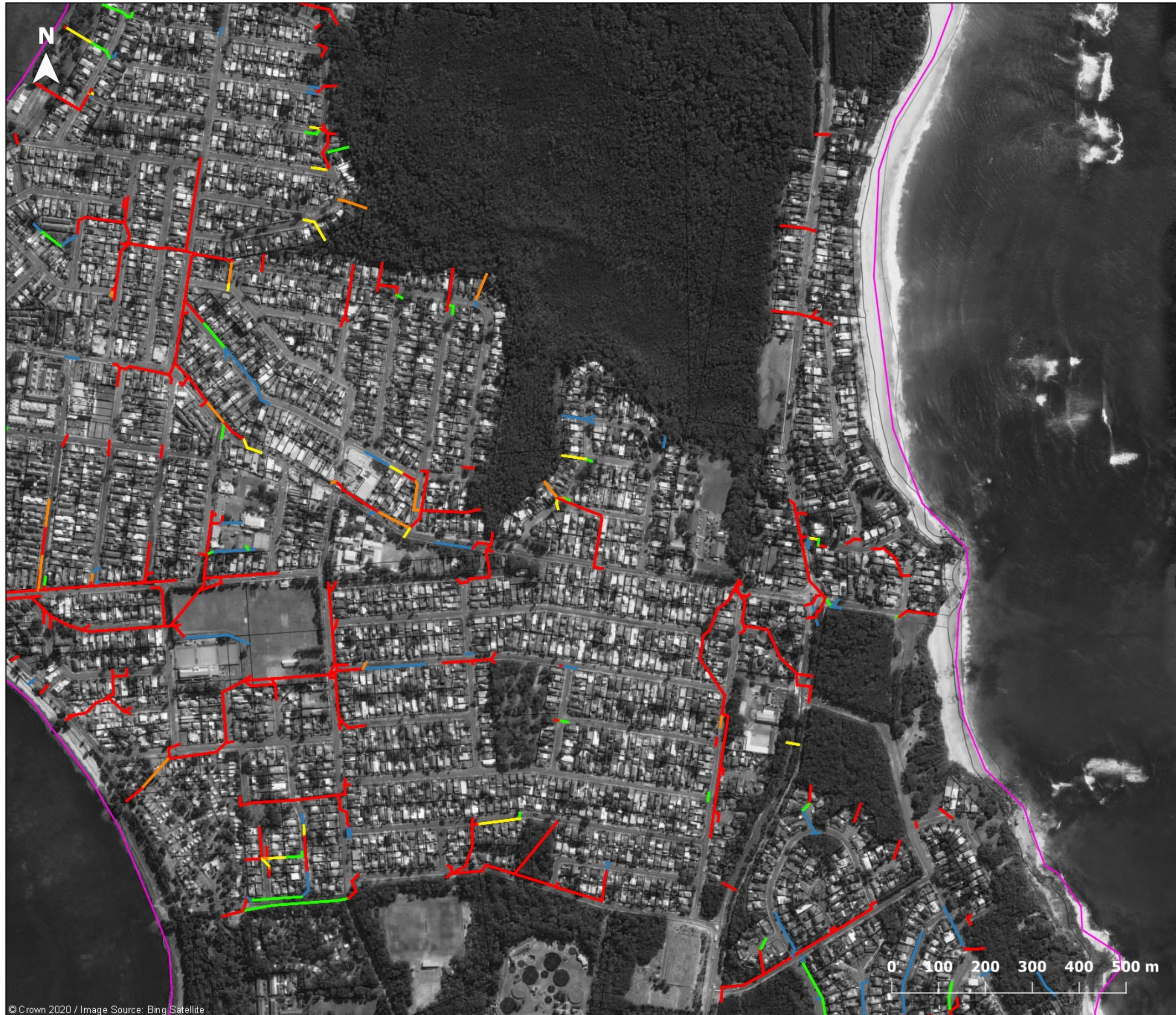
**5% AEP  
Pipe capacity**

**Legend**

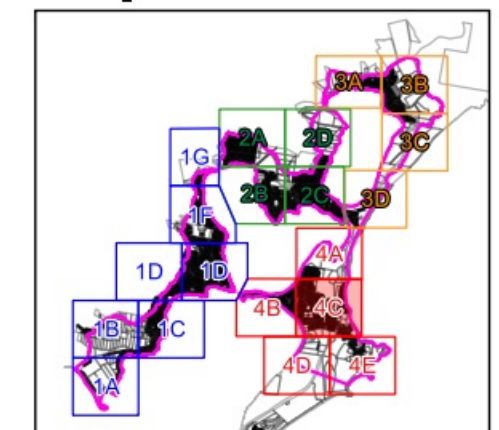
-  Catchment area
-  Cadastre

**Pipe Percentage Full**

-  0% - 20%
-  20% - 40%
-  40% - 60%
-  60% - 80%
-  80% - 100%



**Map 4C**



**Report MHL2571**

Northern Lakes Floodplain  
Risk Management Study &  
Plan


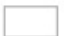
N








# Figure J2.19

## 5% AEP Pipe capacity

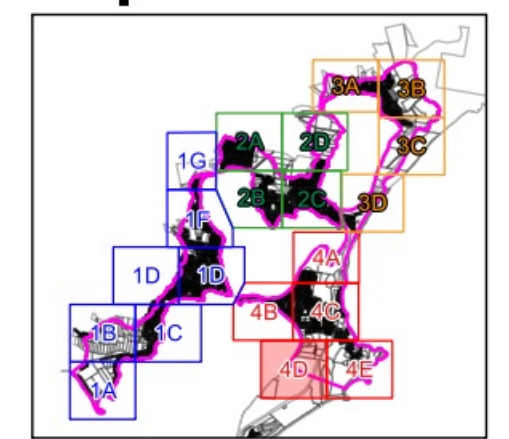
### Legend

-  Catchment area
-  Cadastre

### Pipe Percentage Full

-  0% - 20%
-  20% - 40%
-  40% - 60%
-  60% - 80%
-  80% - 100%

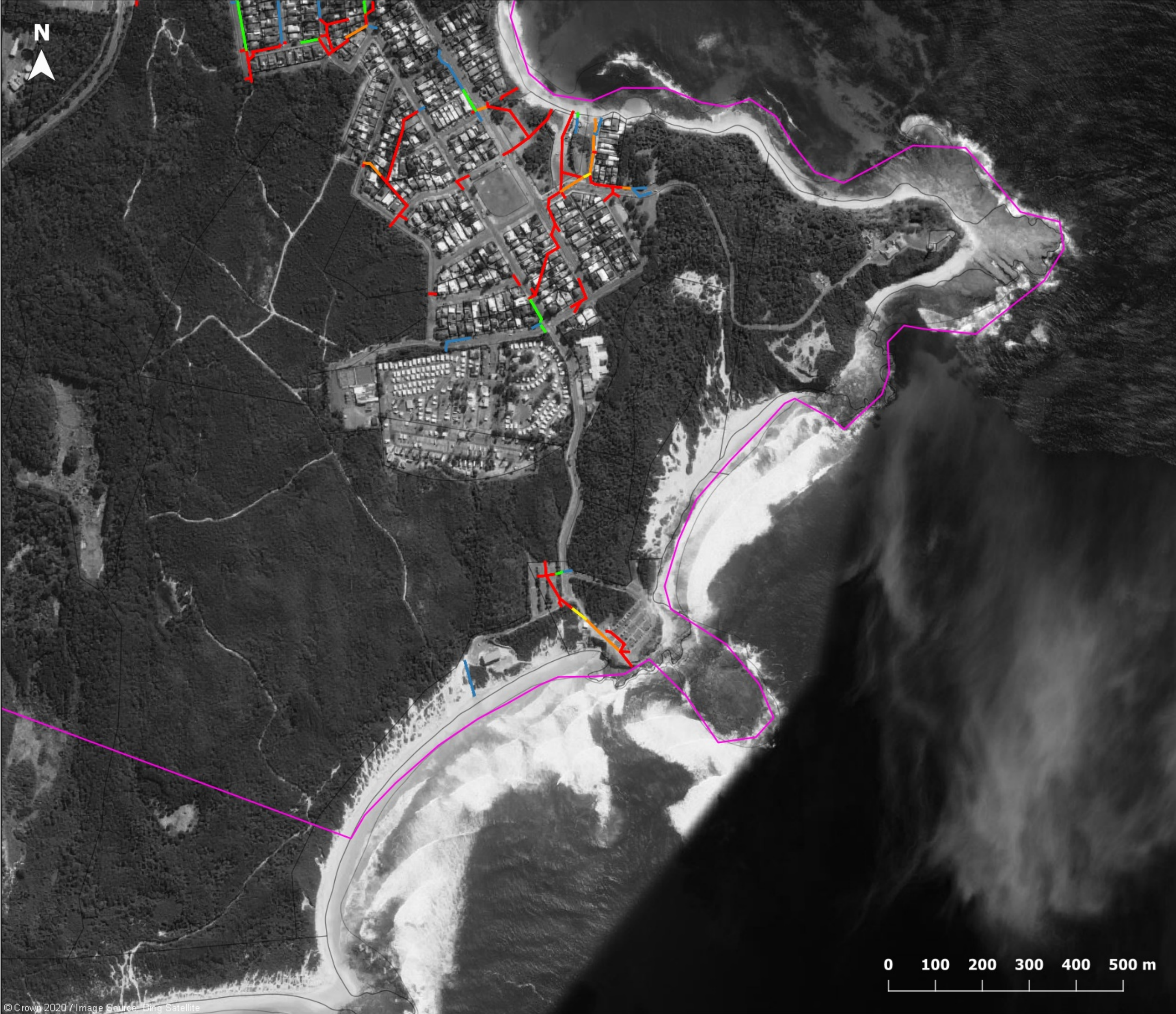
## Map 4D



## Report MHL2571

Northern Lakes Floodplain  
Risk Management Study &  
Plan





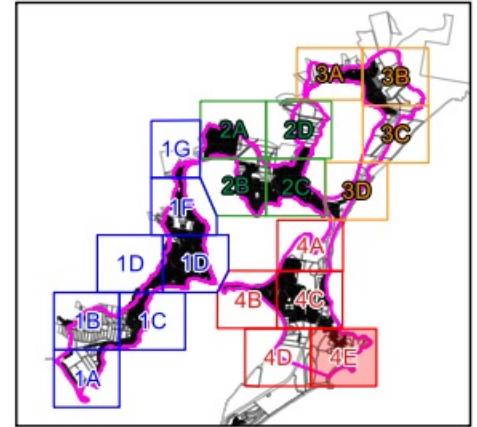
**Figure J2.20**

**5% AEP  
Pipe capacity**

- Legend**
- Catchment area
  - Cadastre

- Pipe Percentage Full**
- 0% - 20%
  - 20% - 40%
  - 40% - 60%
  - 60% - 80%
  - 80% - 100%

**Map 4E**



**Report MHL2571**  
Northern Lakes Floodplain  
Risk Management Study &  
Plan



© Crown 2020 / Image Source: Bing Satellite