

Figure J3.1

**1% AEP
Pipe capacity**

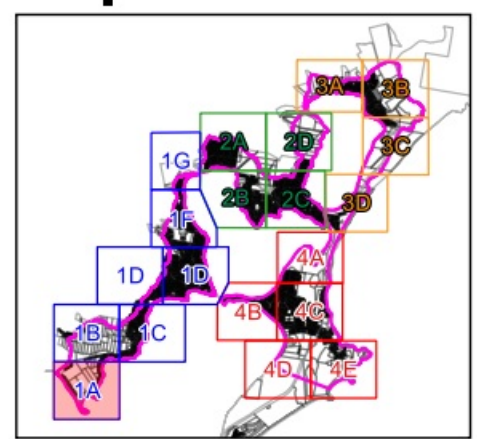
Legend

- Catchment area
- Cadastre

Pipe Percentage Full

- 0% - 20%
- 20% - 40%
- 40% - 60%
- 60% - 80%
- 80% - 100%

Map 1A



Report MHL2571

Northern Lakes Floodplain
Risk Management Study &
Plan





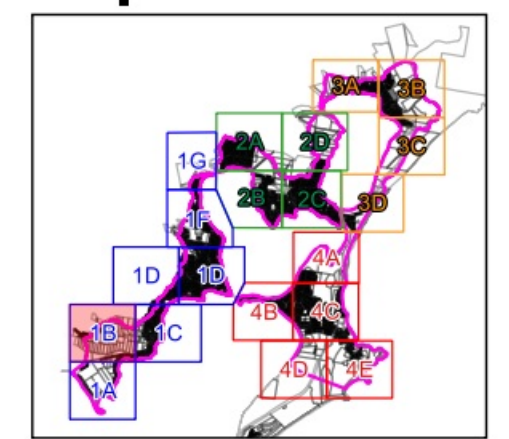
Figure J3.2

**1% AEP
Pipe capacity**

- Legend**
- Catchment area
 - Cadastre

- Pipe Percentage Full**
- 0% - 20%
 - 20% - 40%
 - 40% - 60%
 - 60% - 80%
 - 80% - 100%

Map 1B



Report MHL2571
Northern Lakes Floodplain
Risk Management Study &
Plan

© Crown 2020 / Image Source: Bing Satellite



Figure J3.3

**1% AEP
Pipe capacity**

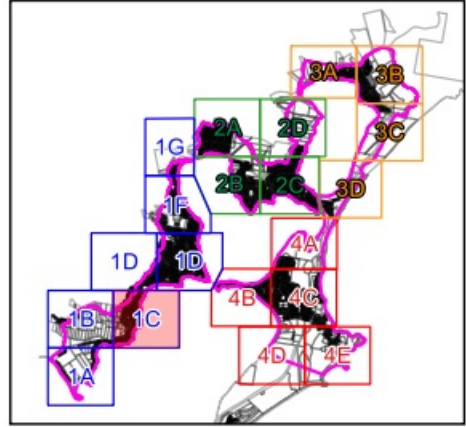
Legend

- Catchment area
- Cadastre

Pipe Percentage Full

- 0% - 20%
- 20% - 40%
- 40% - 60%
- 60% - 80%
- 80% - 100%

Map 1C



Report MHL2571

Northern Lakes Floodplain
Risk Management Study &
Plan



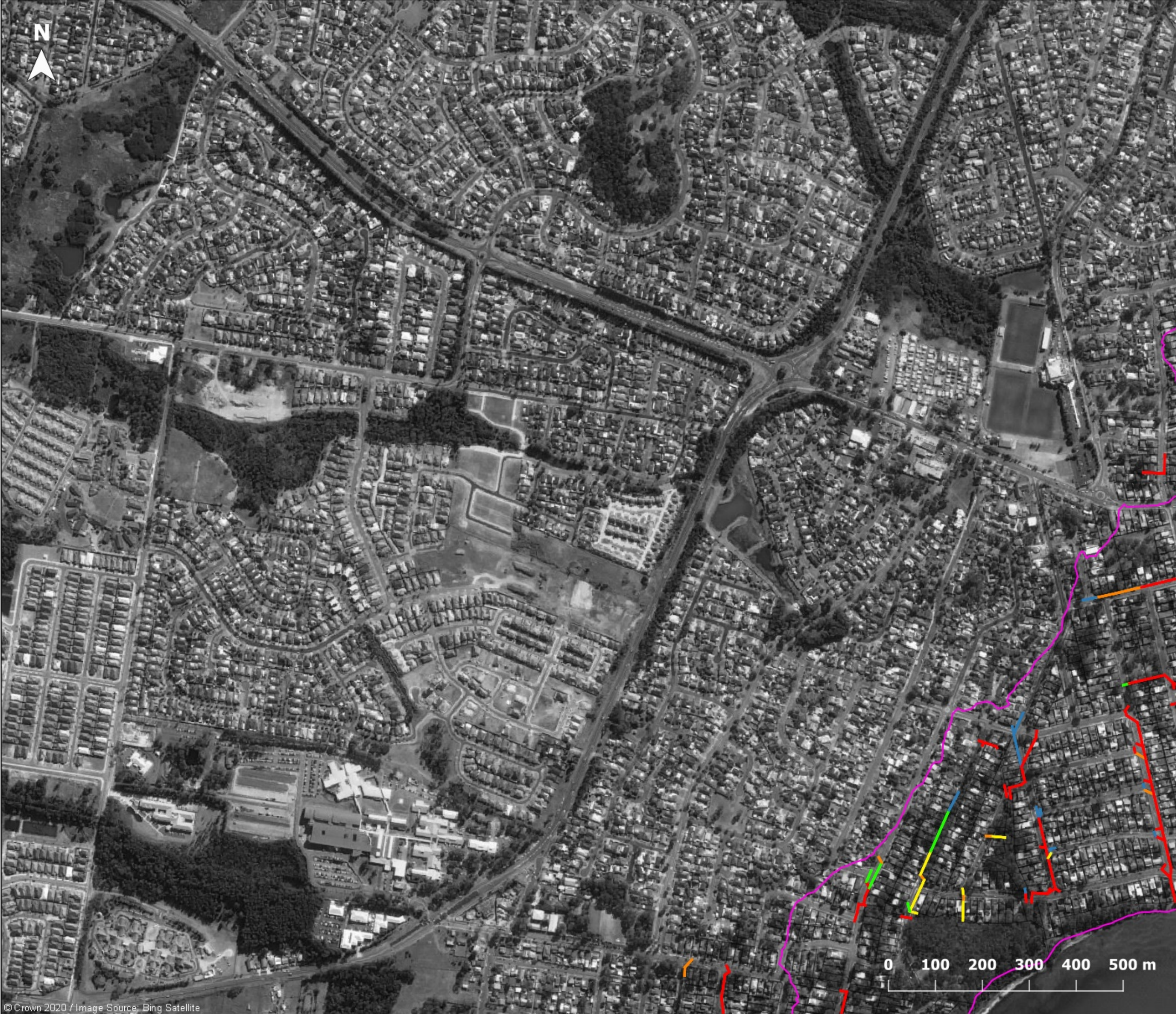


Figure J3.4

**1% AEP
Pipe capacity**

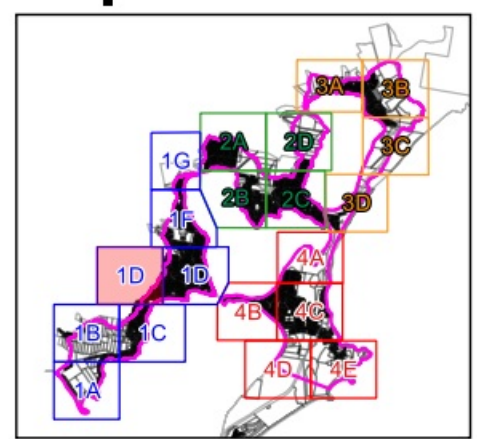
Legend

- Catchment area
- Cadastre

Pipe Percentage Full

- 0% - 20%
- 20% - 40%
- 40% - 60%
- 60% - 80%
- 80% - 100%

Map 1D



Report MHL2571



Northern Lakes Floodplain
Risk Management Study &
Plan








Figure J3.5

**1% AEP
Pipe capacity**

Legend

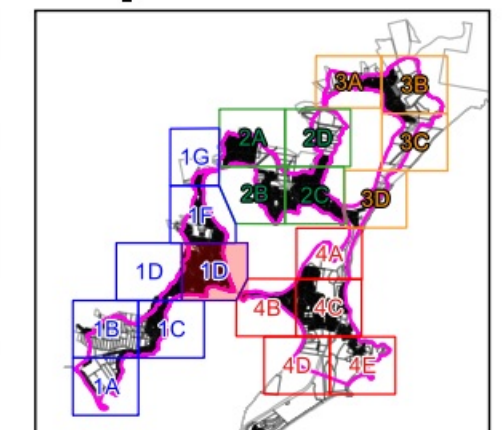
-  Catchment area
-  Cadastre

Pipe Percentage Full

-  0% - 20%
-  20% - 40%
-  40% - 60%
-  60% - 80%
-  80% - 100%



Map 1D



Report MHL2571

Northern Lakes Floodplain
Risk Management Study &
Plan



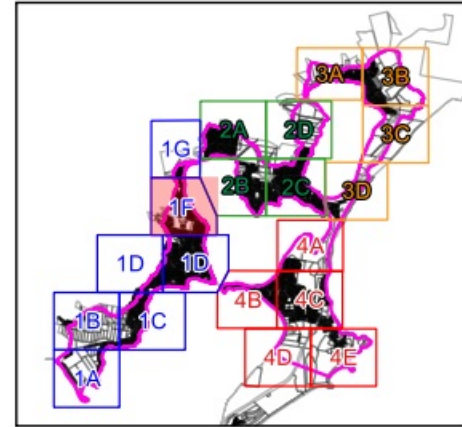
Figure J3.6

**1% AEP
Pipe capacity**

- Legend**
- Catchment area
 - Cadastre

- Pipe Percentage Full**
- 0% - 20%
 - 20% - 40%
 - 40% - 60%
 - 60% - 80%
 - 80% - 100%

Map 1F



Report MHL2571
Northern Lakes Floodplain
Risk Management Study &
Plan



© Crown 2020 / Image Source: Bing Satellite



Figure J3.7

**1% AEP
Pipe capacity**

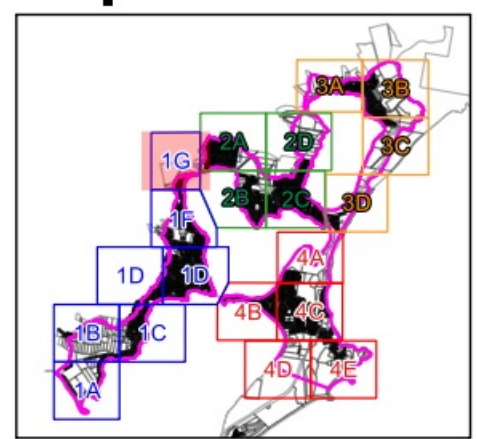
Legend

- Catchment area
- Cadastre

Pipe Percentage Full

- 0% - 20%
- 20% - 40%
- 40% - 60%
- 60% - 80%
- 80% - 100%

Map 1G



Report MHL2571

Northern Lakes Floodplain
Risk Management Study &
Plan





Figure J3.8

**1% AEP
Pipe capacity**

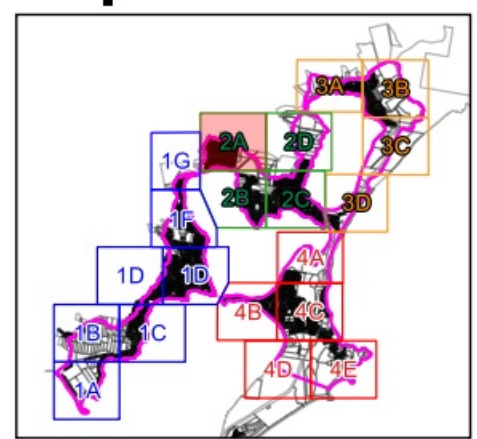
Legend

- Catchment area
- Cadastre

Pipe Percentage Full

- 0% - 20%
- 20% - 40%
- 40% - 60%
- 60% - 80%
- 80% - 100%

Map 2A



Report MHL2571

Northern Lakes Floodplain
Risk Management Study &
Plan



© Crown 2020 / Image Source: Bing Satellite



Figure J3.9

**1% AEP
Pipe capacity**

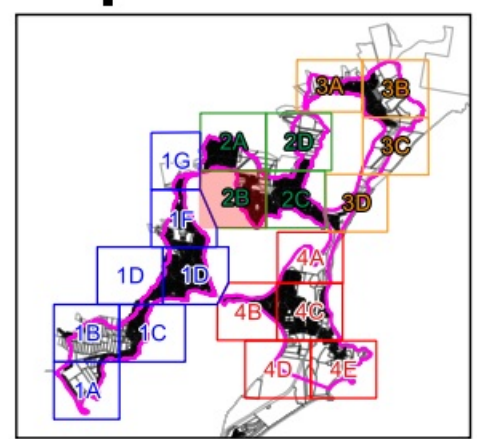
Legend

- Catchment area
- Cadastre

Pipe Percentage Full

- 0% - 20%
- 20% - 40%
- 40% - 60%
- 60% - 80%
- 80% - 100%

Map 2B



Report MHL2571

Northern Lakes Floodplain
Risk Management Study &
Plan



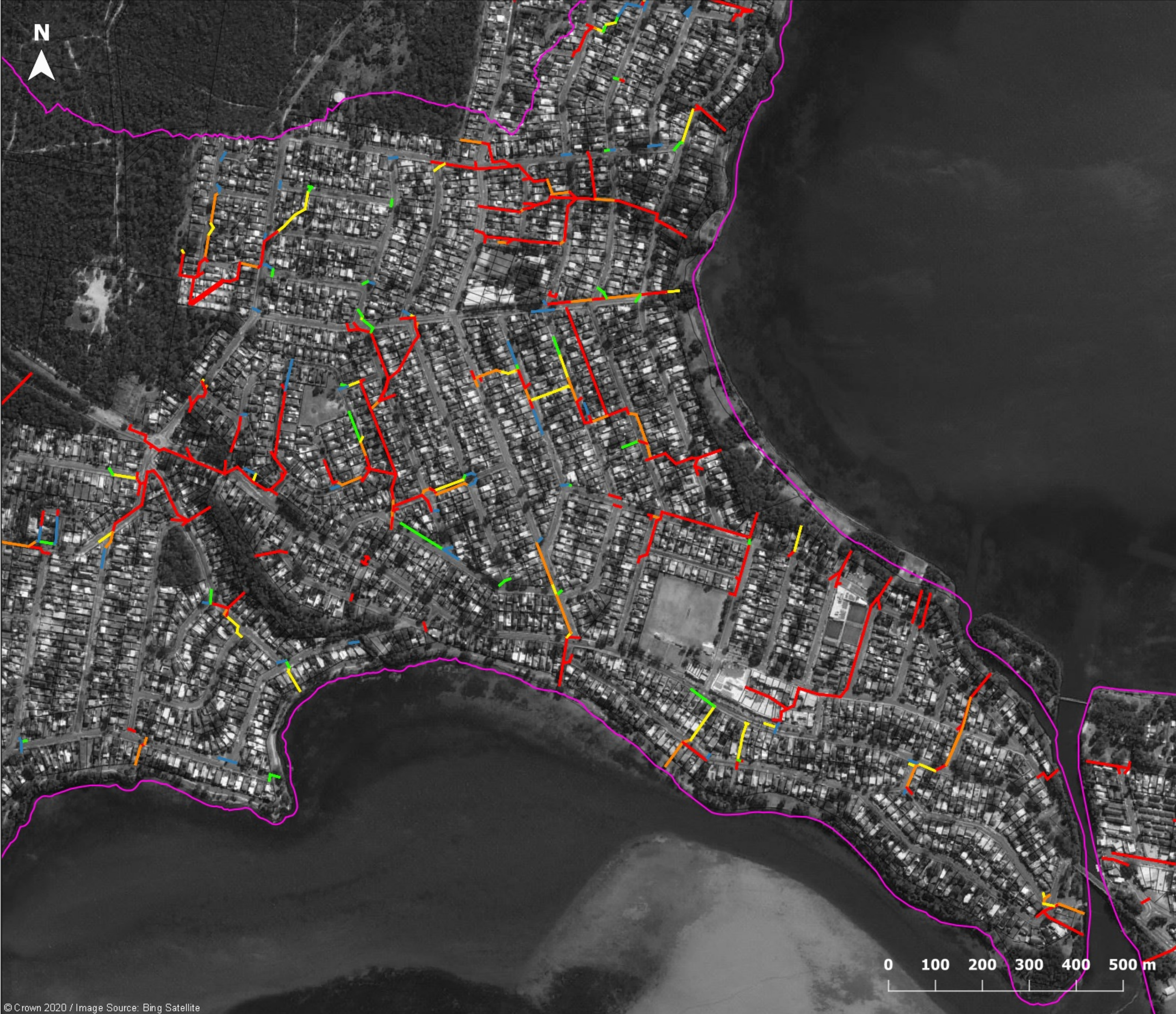


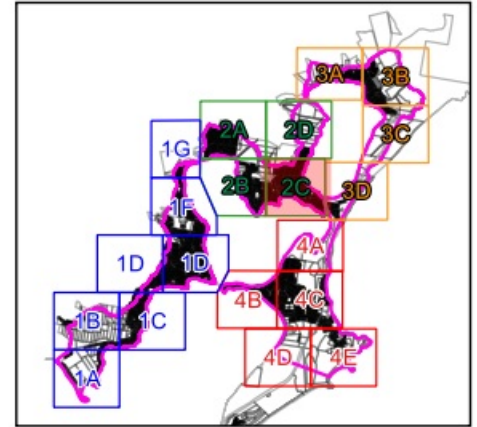
Figure J3.10

**1% AEP
Pipe capacity**

- Legend**
- Catchment area
 - Cadastre

- Pipe Percentage Full**
- 0% - 20%
 - 20% - 40%
 - 40% - 60%
 - 60% - 80%
 - 80% - 100%

Map 2C



Report MHL2571
Northern Lakes Floodplain
Risk Management Study &
Plan



© Crown 2020 / Image Source: Bing Satellite



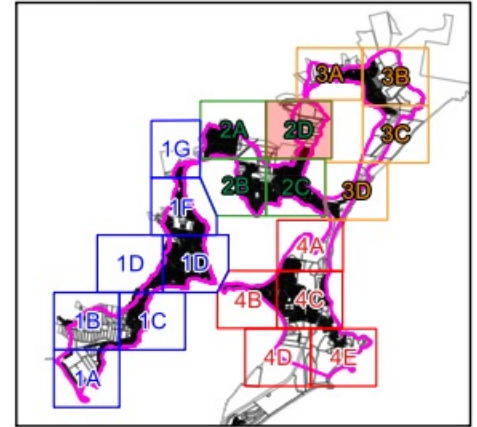
Figure J3.11

**1% AEP
Pipe capacity**

- Legend**
- Catchment area
 - Cadastre

- Pipe Percentage Full**
- 0% - 20%
 - 20% - 40%
 - 40% - 60%
 - 60% - 80%
 - 80% - 100%

Map 2D



Report MHL2571
Northern Lakes Floodplain
Risk Management Study &
Plan



© Crown 2020 / Image Source: Bing Satellite



Figure J3.12

**1% AEP
Pipe capacity**

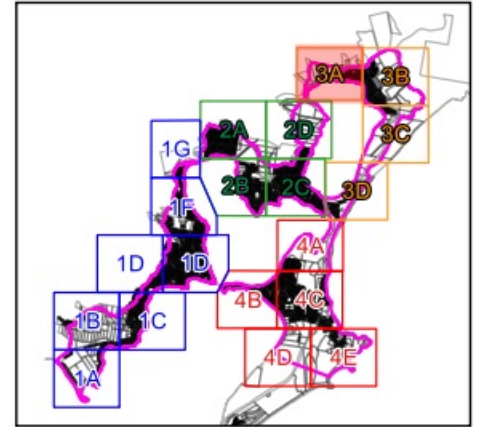
Legend

- Catchment area
- Cadastre

Pipe Percentage Full

- 0% - 20%
- 20% - 40%
- 40% - 60%
- 60% - 80%
- 80% - 100%

Map 3A



Report MHL2571

Northern Lakes Floodplain
Risk Management Study &
Plan



© Crown 2020 / Image Source: Bing Satellite

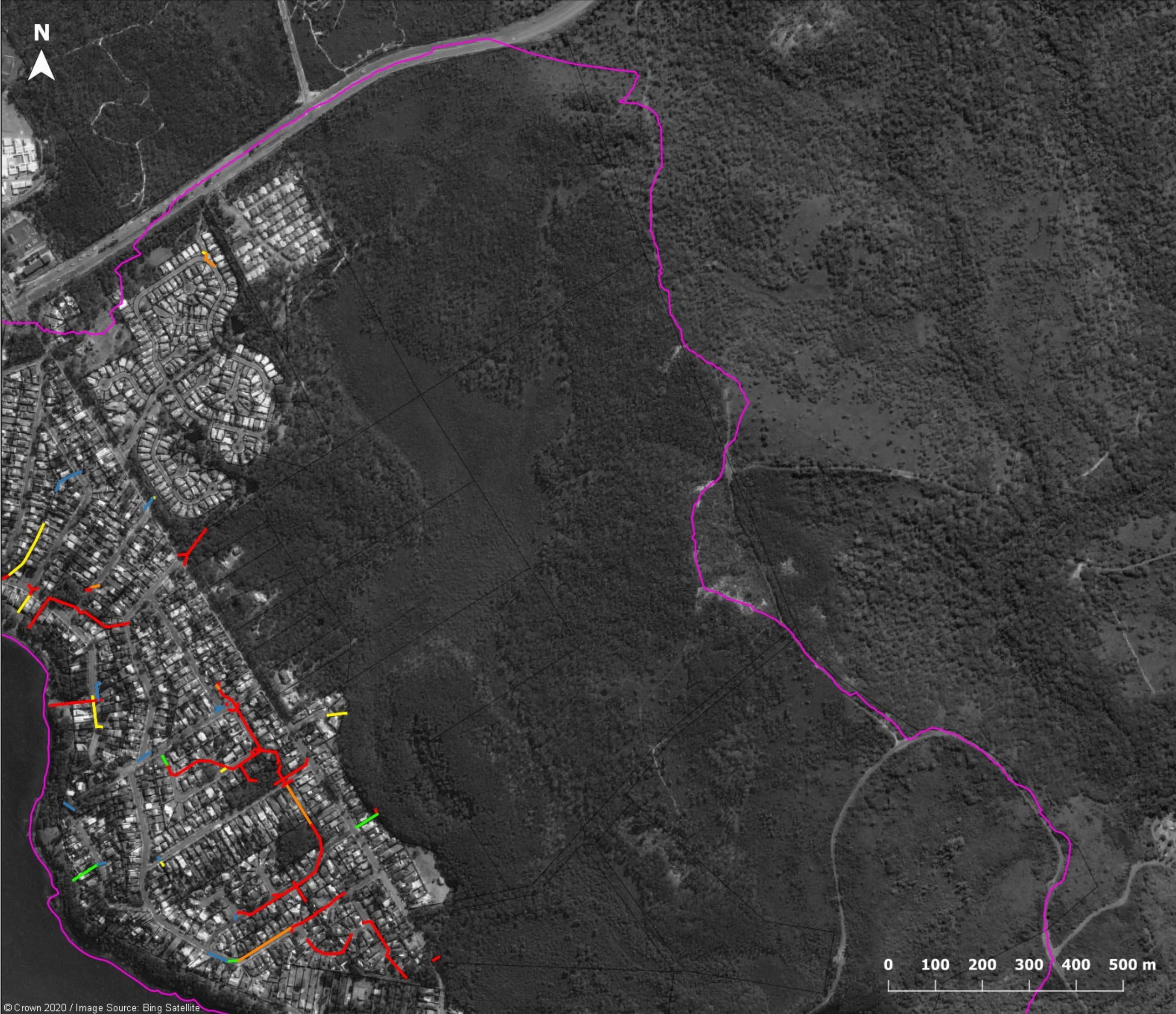


Figure J3.13

**1% AEP
Pipe capacity**

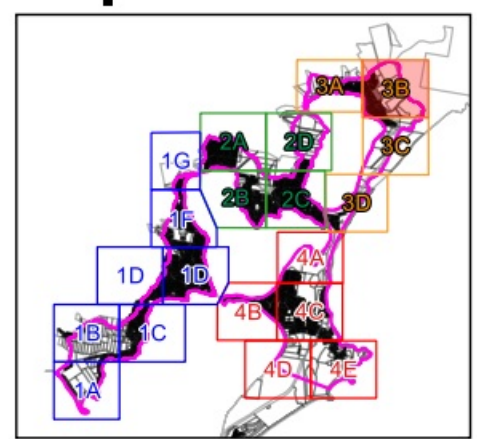
Legend

- Catchment area
- Cadastre

Pipe Percentage Full

- 0% - 20%
- 20% - 40%
- 40% - 60%
- 60% - 80%
- 80% - 100%

Map 3B



Report MHL2571

Northern Lakes Floodplain
Risk Management Study &
Plan



© Crown 2020 / Image Source: Bing Satellite



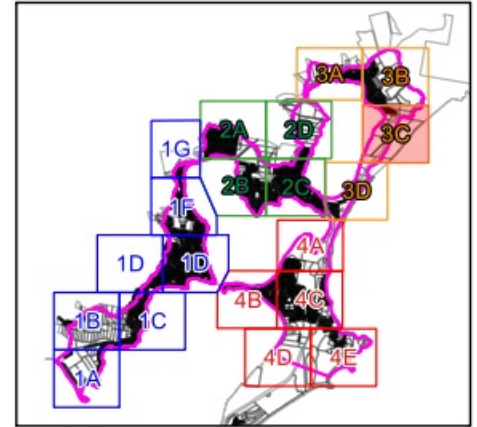
Figure J3.14

**1% AEP
Pipe capacity**

- Legend**
- Catchment area
 - Cadastre

- Pipe Percentage Full**
- 0% - 20%
 - 20% - 40%
 - 40% - 60%
 - 60% - 80%
 - 80% - 100%

Map 3C



Report MHL2571
Northern Lakes Floodplain
Risk Management Study &
Plan








© Crown 2020 / Image Source: Bing Satellite



Figure J3.15

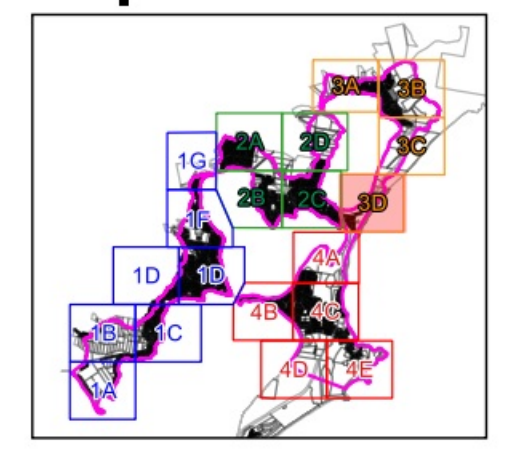
**1% AEP
Pipe capacity**

- Legend**
-  Catchment area
 -  Cadastre

- Pipe Percentage Full**
-  0% - 20%
 -  20% - 40%
 -  40% - 60%
 -  60% - 80%
 -  80% - 100%



Map 3D



Report MHL2571

Northern Lakes Floodplain
Risk Management Study &
Plan





Figure J3.16

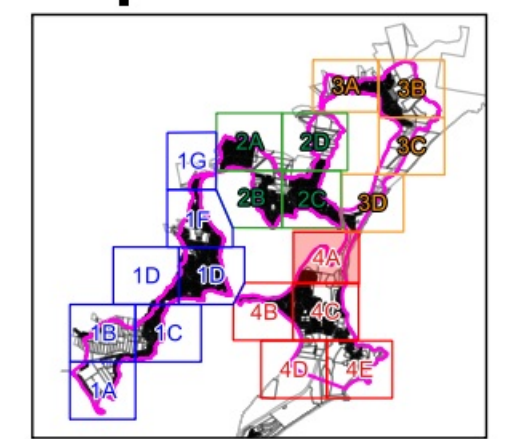
**1% AEP
Pipe capacity**

- Legend**
- Catchment area
 - Cadastre

- Pipe Percentage Full**
- 0% - 20%
 - 20% - 40%
 - 40% - 60%
 - 60% - 80%
 - 80% - 100%



Map 4A



Report MHL2571
Northern Lakes Floodplain
Risk Management Study &
Plan





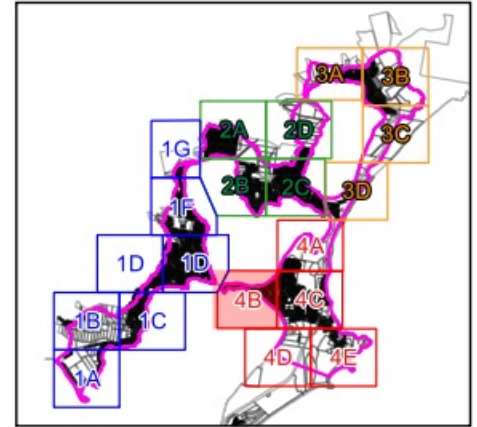
Figure J3.17

**1% AEP
Pipe capacity**

- Legend**
- Catchment area
 - Cadastre

- Pipe Percentage Full**
- 0% - 20%
 - 20% - 40%
 - 40% - 60%
 - 60% - 80%
 - 80% - 100%

Map 4B





Report MHL2571
Northern Lakes Floodplain
Risk Management Study &
Plan








Figure J3.18

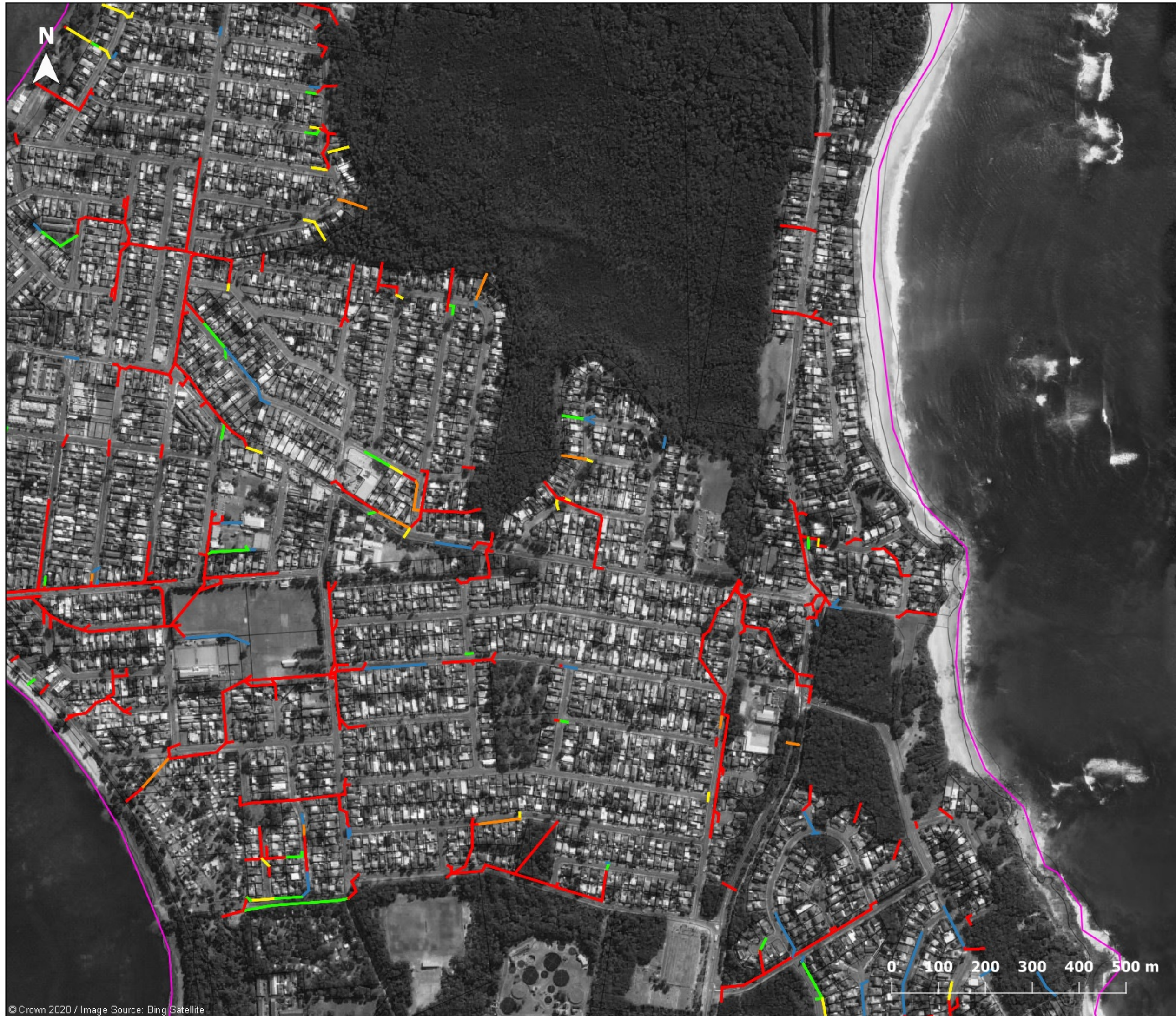
**1% AEP
Pipe capacity**

Legend

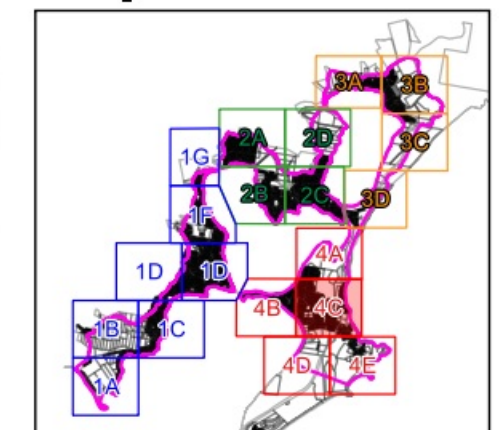
-  Catchment area
-  Cadastre

Pipe Percentage Full

-  0% - 20%
-  20% - 40%
-  40% - 60%
-  60% - 80%
-  80% - 100%



Map 4C



Report MHL2571

Northern Lakes Floodplain
Risk Management Study &
Plan


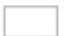
N








Figure J3.19

**1% AEP
Pipe capacity**

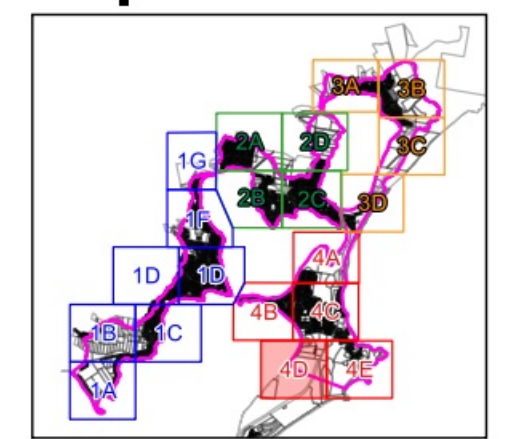
Legend

-  Catchment area
-  Cadastre

Pipe Percentage Full

-  0% - 20%
-  20% - 40%
-  40% - 60%
-  60% - 80%
-  80% - 100%

Map 4D



Report MHL2571

Northern Lakes Floodplain
Risk Management Study &
Plan



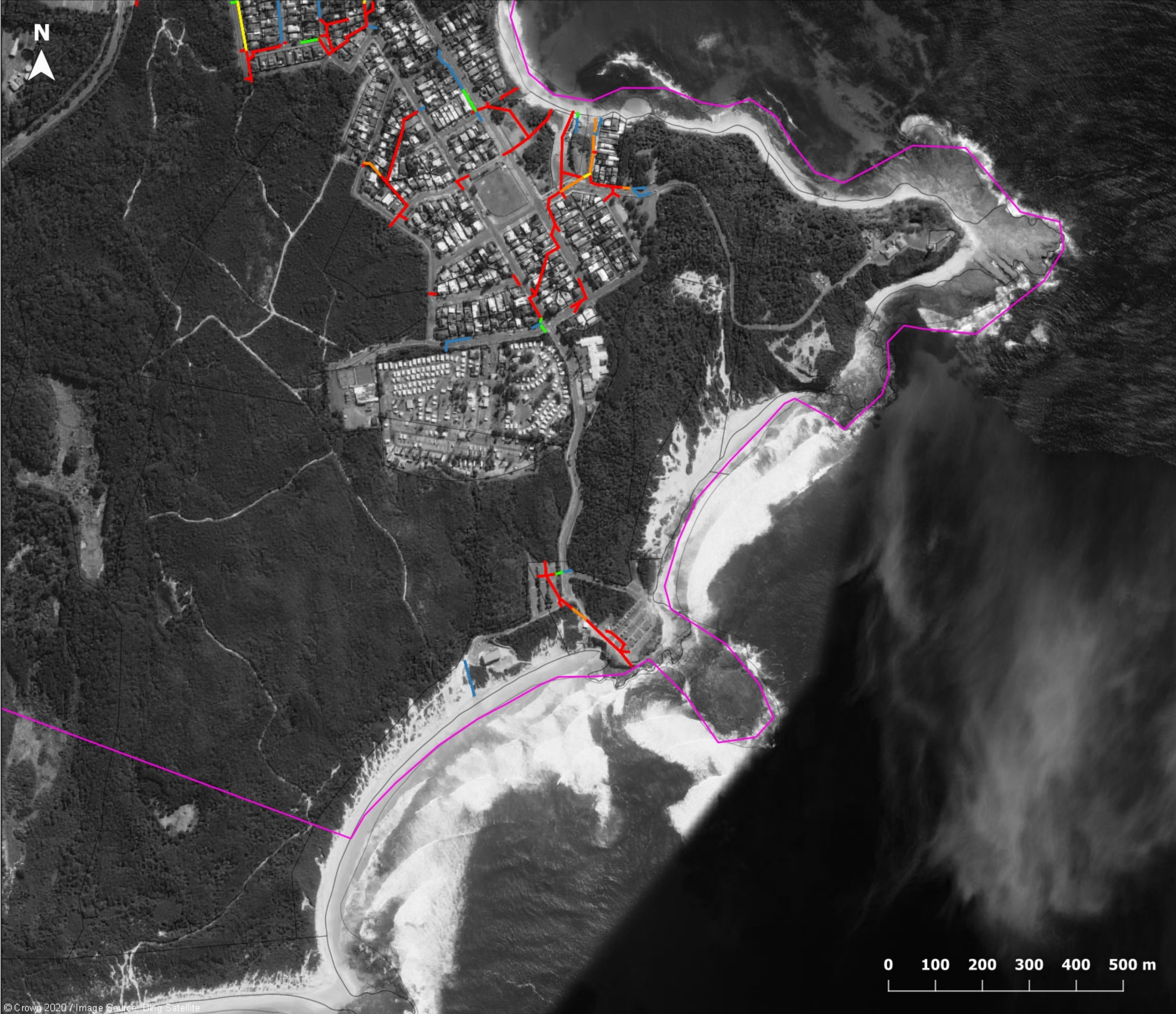


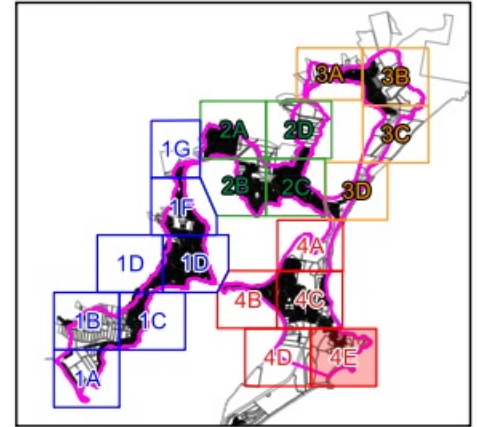
Figure J3.20

**1% AEP
Pipe capacity**

- Legend**
- ▭ Catchment area
 - ▭ Cadastre

- Pipe Percentage Full**
- 0% - 20%
 - 20% - 40%
 - 40% - 60%
 - 60% - 80%
 - 80% - 100%

Map 4E



Report MHL2571
Northern Lakes Floodplain
Risk Management Study &
Plan



© Crown 2020 / Image Source: Bing Satellite