

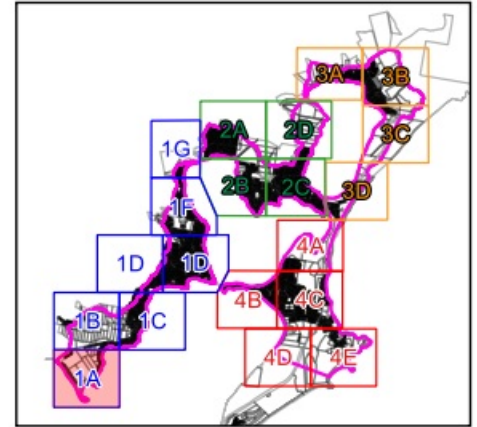


**Figure J4.1**  
**Probable Maximum Flood**  
**Pipe capacity**

**Legend**  
 Catchment area  
 Cadastre

**Pipe Percentage Full**  
 0% - 20%  
 20% - 40%  
 40% - 60%  
 60% - 80%  
 80% - 100%

**Map 1A**



**Report MHL2571**  
 Northern Lakes Floodplain  
 Risk Management Study &  
 Plan



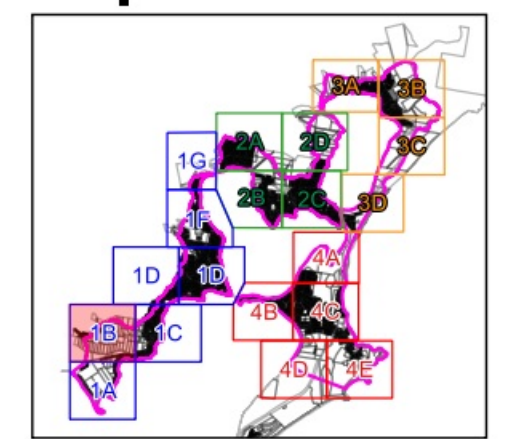




**Figure J4.2**  
**Probable Maximum Flood**  
**Pipe capacity**

- Legend**
- Catchment area
  - Cadastre
- Pipe Percentage Full**
- 0% - 20%
  - 20% - 40%
  - 40% - 60%
  - 60% - 80%
  - 80% - 100%

**Map 1B**

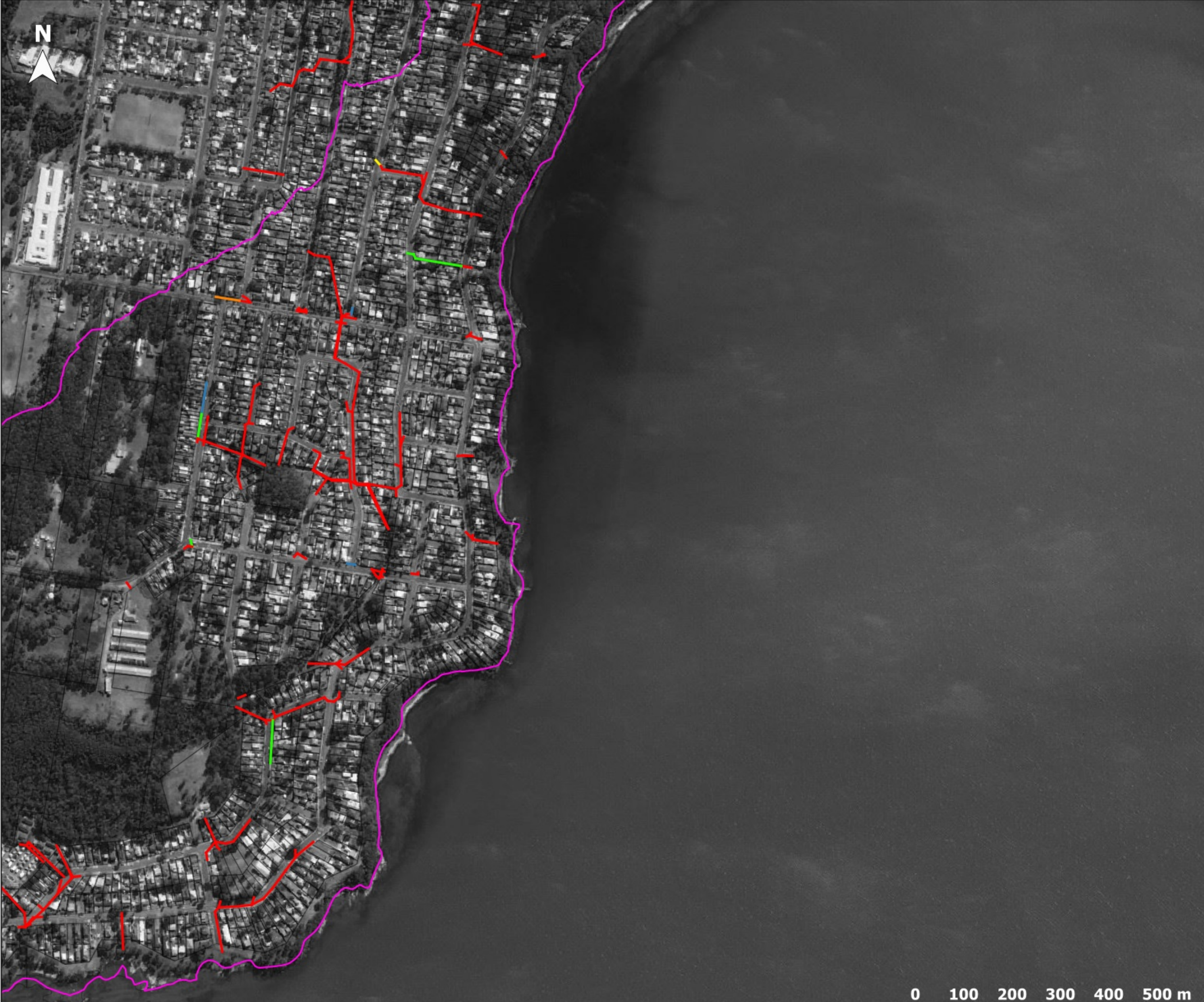


**Report MHL2571**  
 Northern Lakes Floodplain  
 Risk Management Study &  
 Plan



© Crown 2020 / Image Source: Bing Satellite





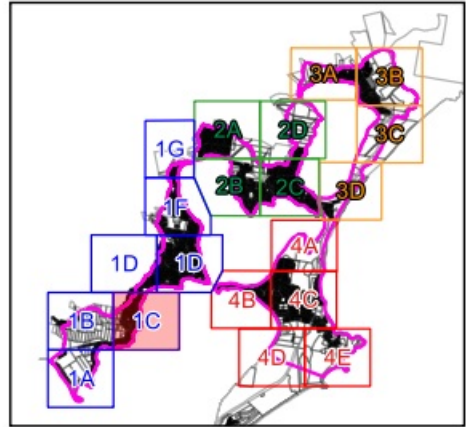
**Figure J4.3**

**Probable Maximum Flood  
Pipe capacity**

- Legend**
- Catchment area
  - Cadastre

- Pipe Percentage Full**
- 0% - 20%
  - 20% - 40%
  - 40% - 60%
  - 60% - 80%
  - 80% - 100%

**Map 1C**

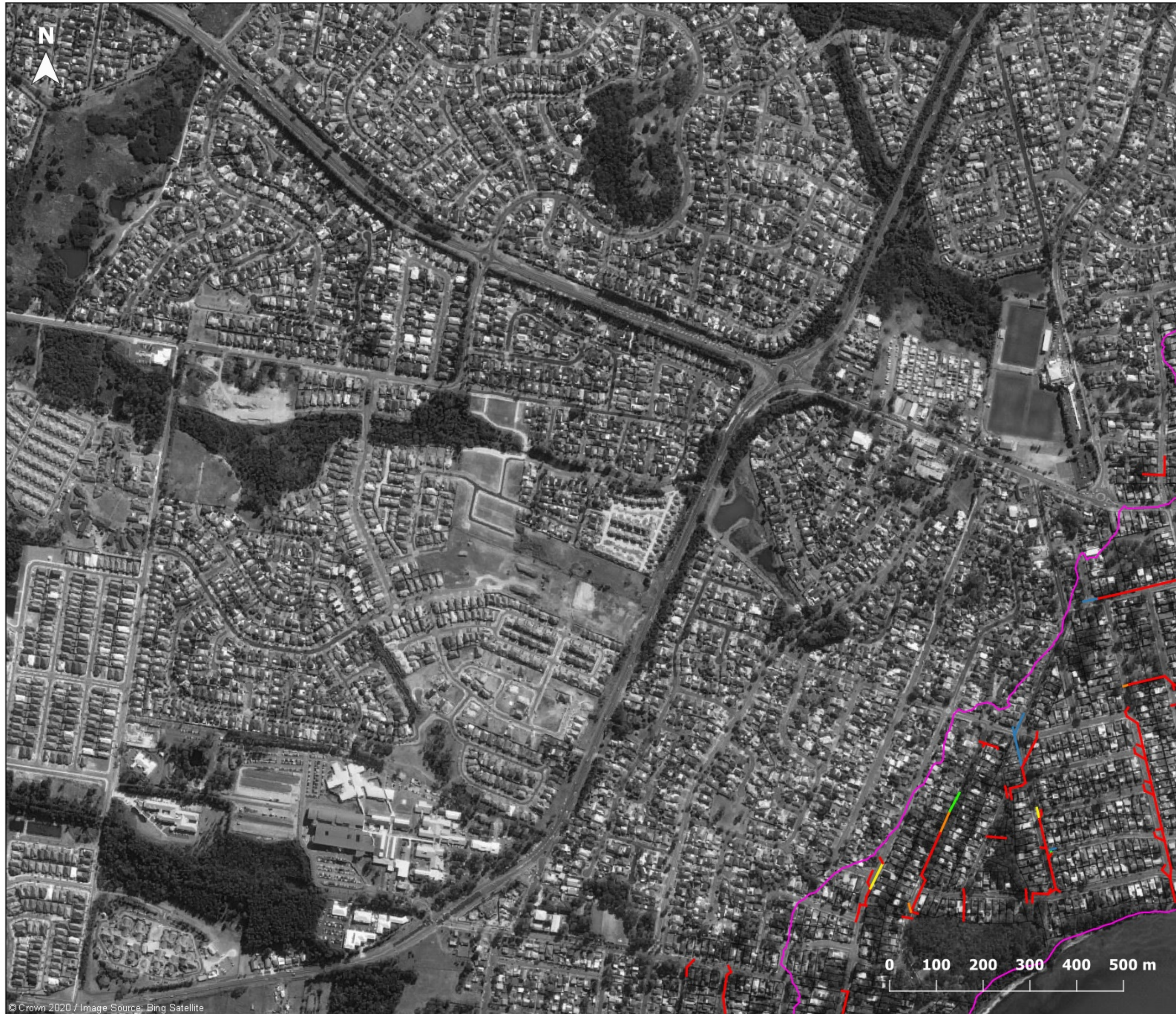


**Report MHL2571**  
Northern Lakes Floodplain  
Risk Management Study &  
Plan



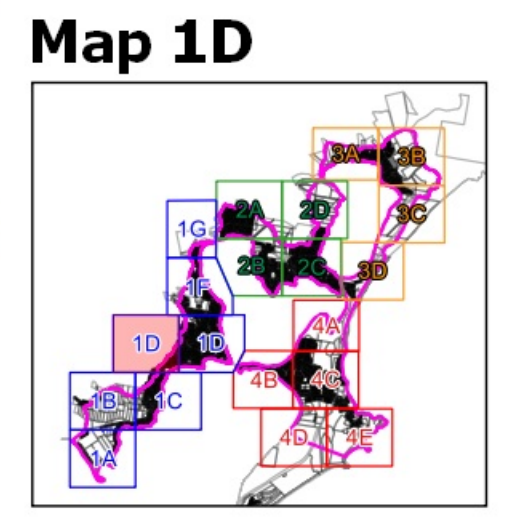
© Crown 2020 / Image Source: Bing Satellite





**Figure J4.4**  
**Probable Maximum Flood**  
**Pipe capacity**

- Legend**
- Catchment area
  - Cadastre
- Pipe Percentage Full**
- 0% - 20%
  - 20% - 40%
  - 40% - 60%
  - 60% - 80%
  - 80% - 100%



**Report MHL2571**  
 Northern Lakes Floodplain  
 Risk Management Study &  
 Plan



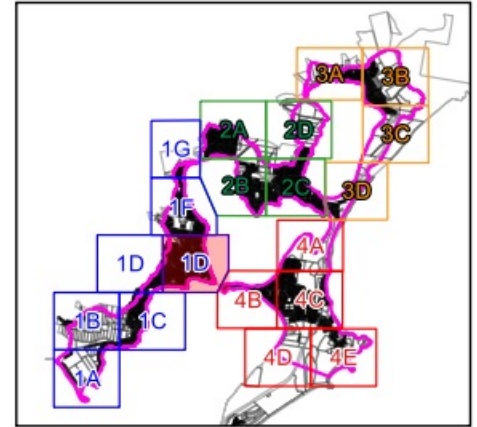


**Figure J4.5**  
**Probable Maximum Flood**  
**Pipe capacity**

**Legend**  
 Catchment area  
 Cadastre

**Pipe Percentage Full**  
 0% - 20%  
 20% - 40%  
 40% - 60%  
 60% - 80%  
 80% - 100%

**Map 1D**



**Report MHL2571**  
 Northern Lakes Floodplain  
 Risk Management Study &  
 Plan



© Crown 2020 / Image Source: Bing Satellite



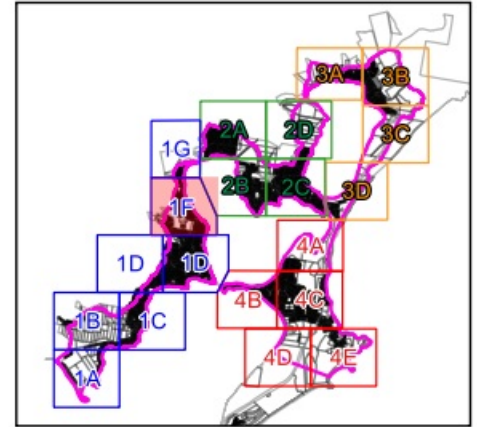


**Figure J4.6**  
**Probable Maximum Flood**  
**Pipe capacity**

**Legend**  
 Catchment area  
 Cadastre

**Pipe Percentage Full**  
 0% - 20%  
 20% - 40%  
 40% - 60%  
 60% - 80%  
 80% - 100%

**Map 1F**



**Report MHL2571**  
 Northern Lakes Floodplain  
 Risk Management Study &  
 Plan



© Crown 2020 / Image Source: Bing Satellite



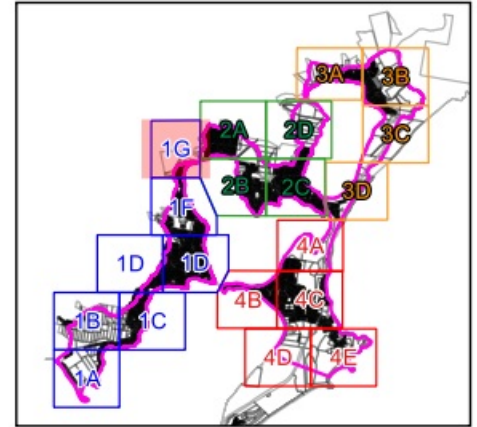


**Figure J4.7**  
**Probable Maximum Flood**  
**Pipe capacity**

**Legend**  
 Catchment area  
 Cadastre

**Pipe Percentage Full**  
 0% - 20%  
 20% - 40%  
 40% - 60%  
 60% - 80%  
 80% - 100%

**Map 1G**



**Report MHL2571**  
 Northern Lakes Floodplain  
 Risk Management Study &  
 Plan



© Crown 2020 / Image Source: Bing Satellite





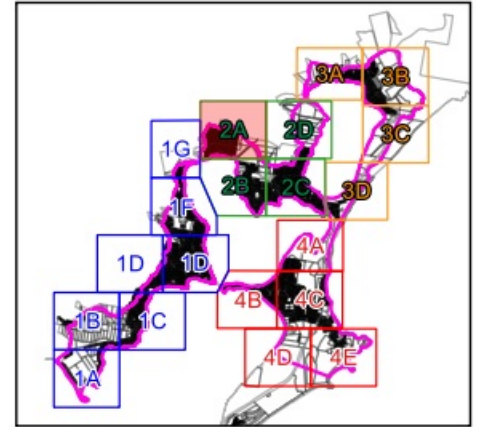
**Figure J4.8**

**Probable Maximum Flood  
Pipe capacity**

- Legend**
- Catchment area
  - Cadastre

- Pipe Percentage Full**
- 0% - 20%
  - 20% - 40%
  - 40% - 60%
  - 60% - 80%
  - 80% - 100%

**Map 2A**



**Report MHL2571**  
Northern Lakes Floodplain  
Risk Management Study &  
Plan



© Crown 2020 / Image Source: Bing Satellite





**Figure J4.9**

**Probable Maximum Flood  
Pipe capacity**

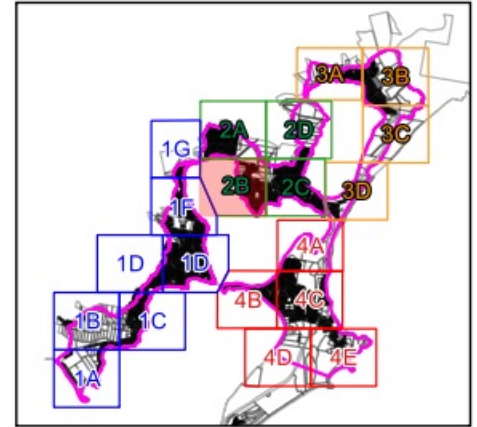
**Legend**

- Catchment area
- Cadastre

**Pipe Percentage Full**

- 0% - 20%
- 20% - 40%
- 40% - 60%
- 60% - 80%
- 80% - 100%

**Map 2B**



**Report MHL2571**

Northern Lakes Floodplain  
Risk Management Study &  
Plan







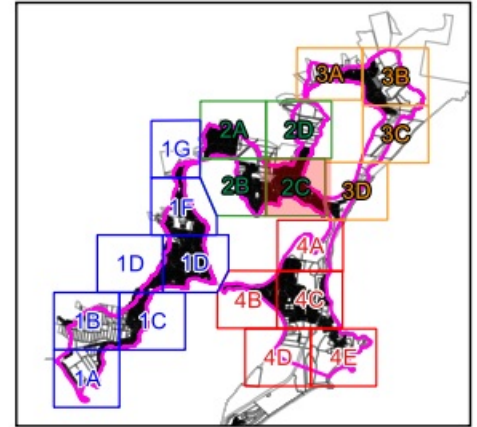
**Figure J4.10**

**Probable Maximum Flood  
Pipe capacity**

- Legend**
- Catchment area
  - Cadastre

- Pipe Percentage Full**
- 0% - 20%
  - 20% - 40%
  - 40% - 60%
  - 60% - 80%
  - 80% - 100%

**Map 2C**



**Report MHL2571**  
Northern Lakes Floodplain  
Risk Management Study &  
Plan



© Crown 2020 / Image Source: Bing Satellite





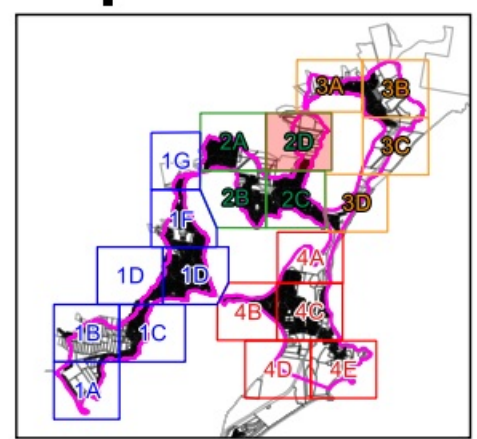
**Figure J4.11**

**Probable Maximum Flood  
Pipe capacity**

- Legend**
- Catchment area
  - Cadastre

- Pipe Percentage Full**
- 0% - 20%
  - 20% - 40%
  - 40% - 60%
  - 60% - 80%
  - 80% - 100%

**Map 2D**



**Report MHL2571**  
Northern Lakes Floodplain  
Risk Management Study &  
Plan



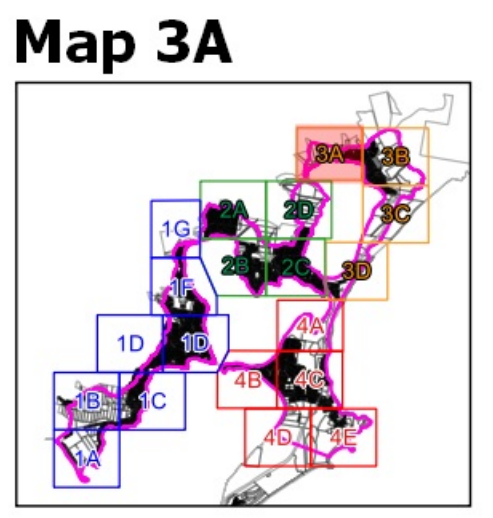
© Crown 2020 / Image Source: Bing Satellite





**Figure J4.12**  
**Probable Maximum Flood**  
**Pipe capacity**

- Legend**
- Catchment area
  - Cadastre
- Pipe Percentage Full**
- 0% - 20%
  - 20% - 40%
  - 40% - 60%
  - 60% - 80%
  - 80% - 100%



**Report MHL2571**  
 Northern Lakes Floodplain  
 Risk Management Study &  
 Plan



© Crown 2020 / Image Source: Bing Satellite

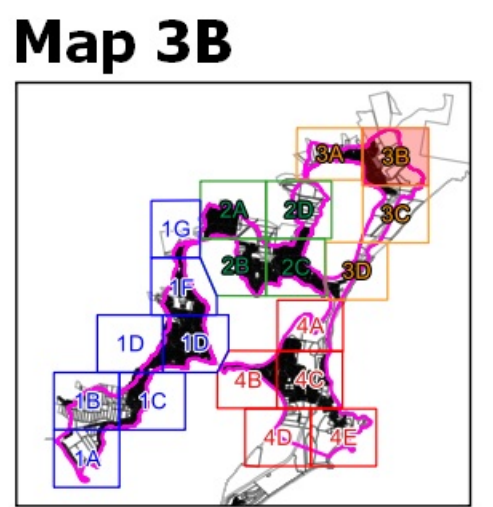




**Figure J4.13**  
**Probable Maximum Flood**  
**Pipe capacity**

**Legend**  
 Catchment area  
 Cadastre

**Pipe Percentage Full**  
 0% - 20%  
 20% - 40%  
 40% - 60%  
 60% - 80%  
 80% - 100%



**Report MHL2571**  
 Northern Lakes Floodplain  
 Risk Management Study &  
 Plan



© Crown 2020 / Image Source: Bing Satellite





**Figure J4.14**

**Probable Maximum Flood  
Pipe capacity**

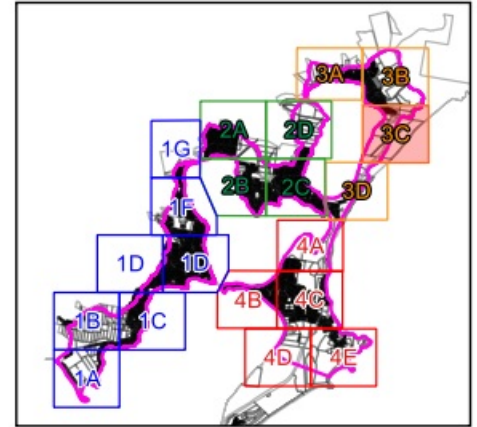
**Legend**

- Catchment area
- Cadastre

**Pipe Percentage Full**

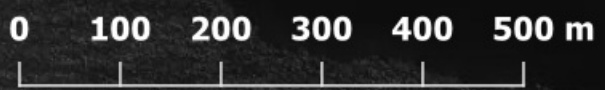
- 0% - 20%
- 20% - 40%
- 40% - 60%
- 60% - 80%
- 80% - 100%

**Map 3C**



**Report MHL2571**

Northern Lakes Floodplain  
Risk Management Study &  
Plan





N



**Figure J4.15**

**Probable Maximum Flood  
Pipe capacity**

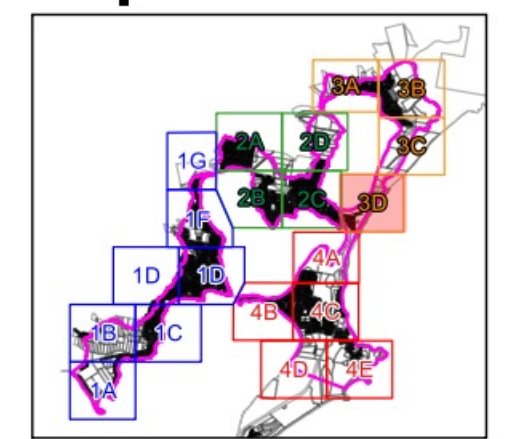
**Legend**

- Catchment area
- Cadastre

**Pipe Percentage Full**

- 0% - 20%
- 20% - 40%
- 40% - 60%
- 60% - 80%
- 80% - 100%

**Map 3D**



**Report MHL2571**

Northern Lakes Floodplain  
Risk Management Study &  
Plan














# Figure J4.16

## Probable Maximum Flood Pipe capacity

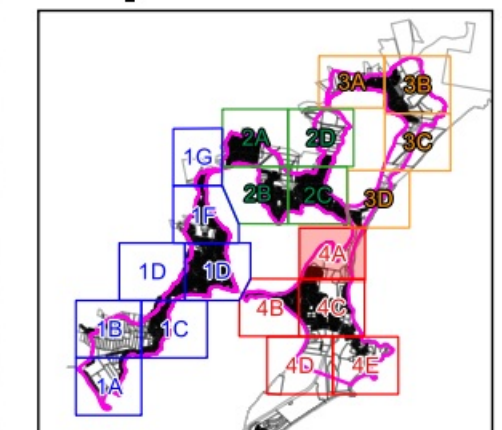
### Legend

-  Catchment area
-  Cadastre

### Pipe Percentage Full

-  0% - 20%
-  20% - 40%
-  40% - 60%
-  60% - 80%
-  80% - 100%

## Map 4A



## Report MHL2571

Northern Lakes Floodplain  
Risk Management Study &  
Plan

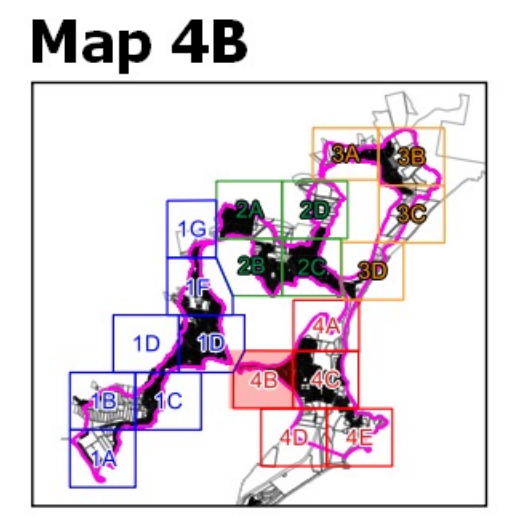






**Figure J4.17**  
**Probable Maximum Flood**  
**Pipe capacity**

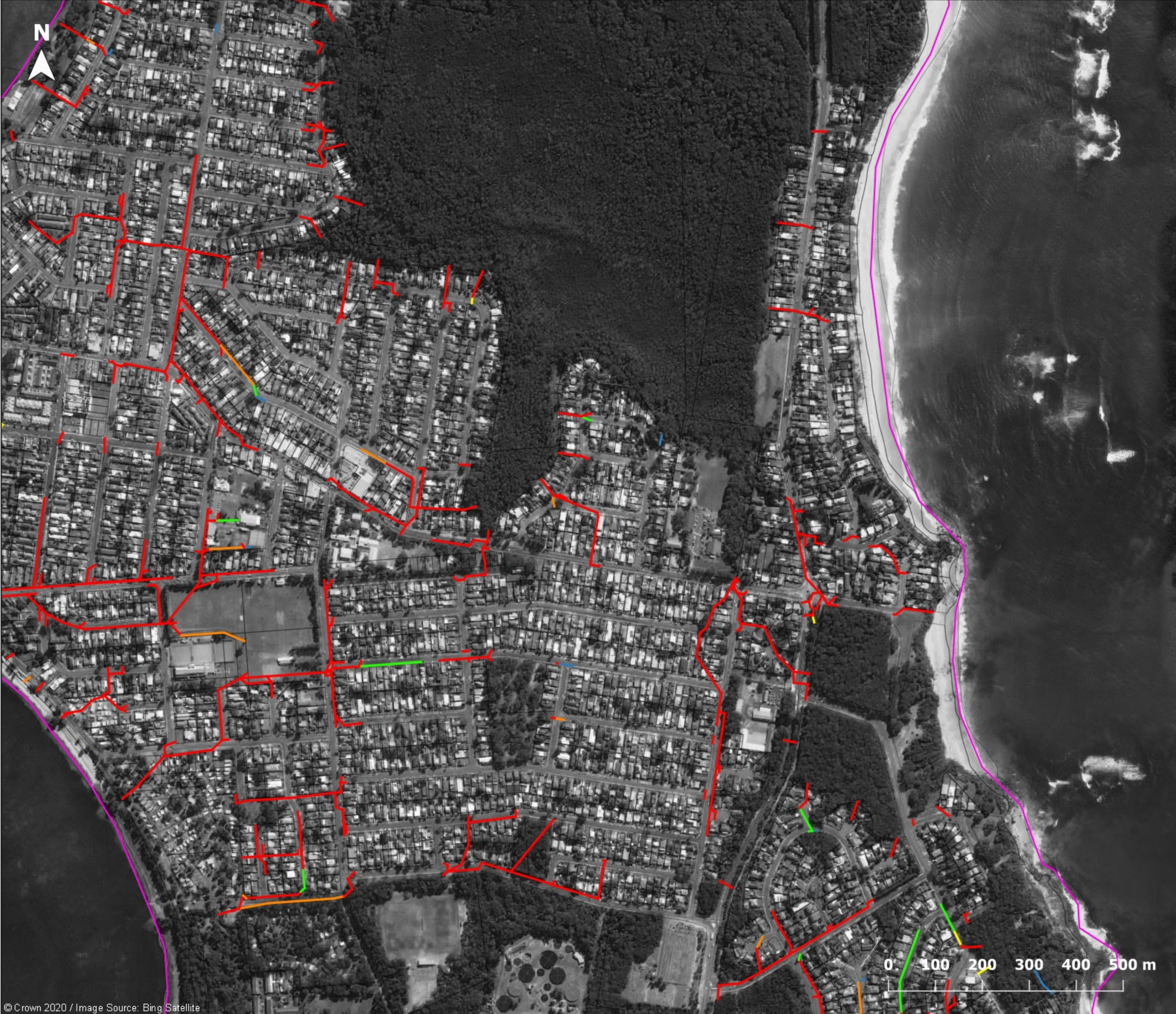
- Legend**
- Catchment area
  - Cadastre
- Pipe Percentage Full**
- 0% - 20%
  - 20% - 40%
  - 40% - 60%
  - 60% - 80%
  - 80% - 100%



**Report MHL2571**  
 Northern Lakes Floodplain  
 Risk Management Study &  
 Plan







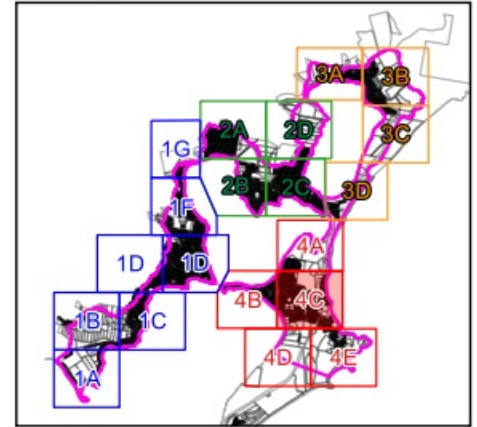
**Figure J4.18**

**Probable Maximum Flood  
Pipe capacity**

- Legend**
- Catchment area
  - Cadastre

- Pipe Percentage Full**
- 0% - 20%
  - 20% - 40%
  - 40% - 60%
  - 60% - 80%
  - 80% - 100%

**Map 4C**



**Report MHL2571**  
Northern Lakes Floodplain  
Risk Management Study &  
Plan





N



# Figure J4.19

## Probable Maximum Flood Pipe capacity

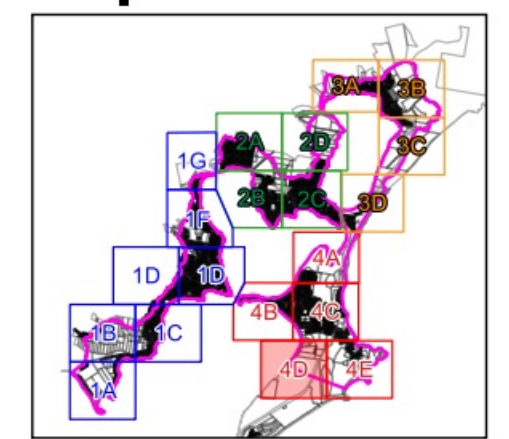
### Legend

- Catchment area
- Cadastre

### Pipe Percentage Full

- 0% - 20%
- 20% - 40%
- 40% - 60%
- 60% - 80%
- 80% - 100%

### Map 4D



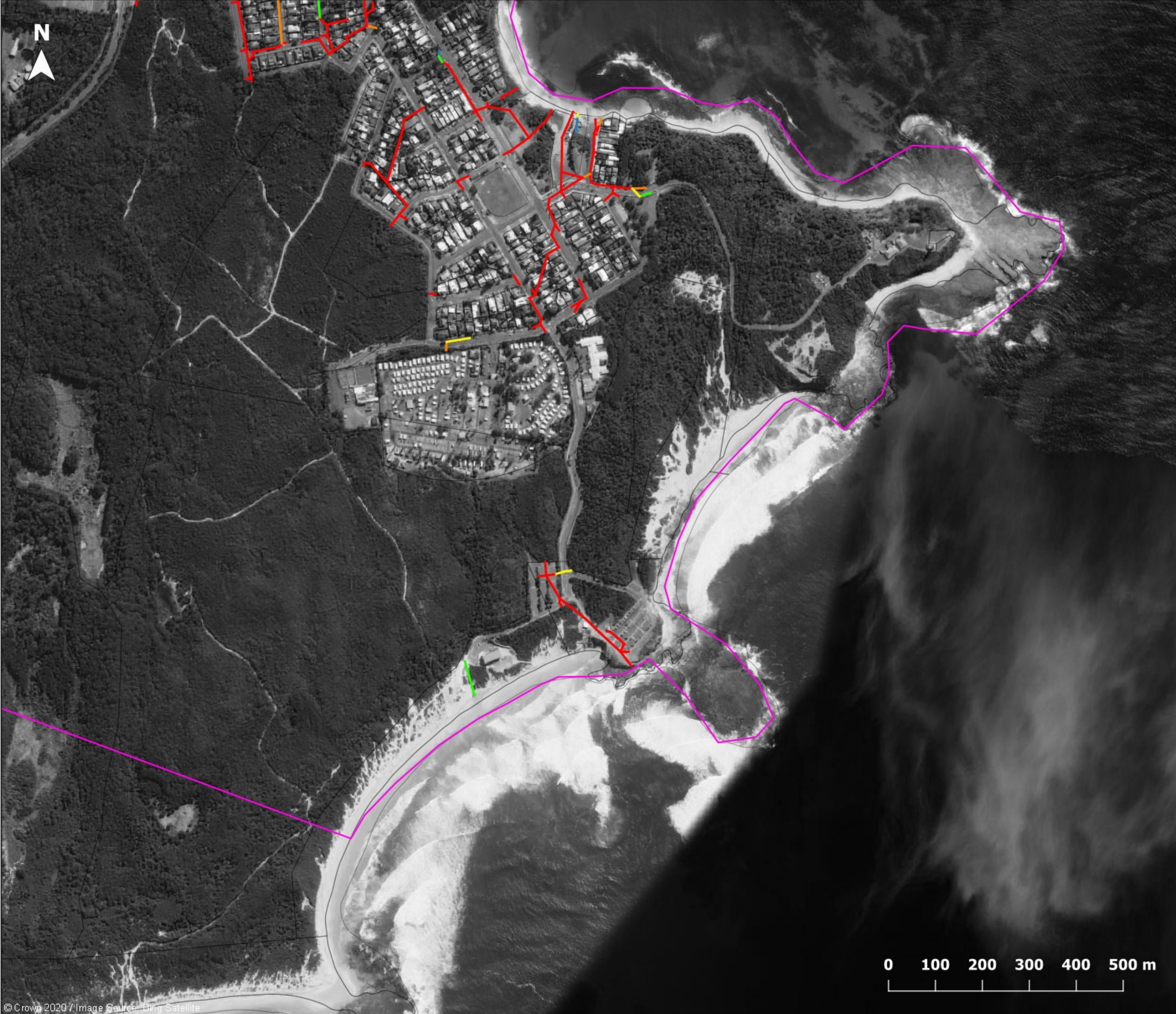
### Report MHL2571

Northern Lakes Floodplain  
Risk Management Study &  
Plan



0 100 200 300 400 500 m





**Figure J4.20**

**Probable Maximum Flood  
Pipe capacity**

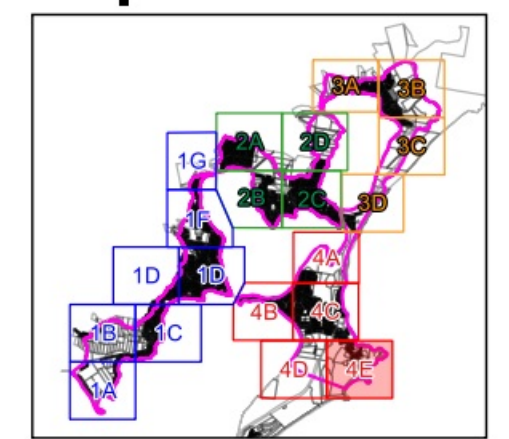
**Legend**

- Catchment area
- Cadastre

**Pipe Percentage Full**

- 0% - 20%
- 20% - 40%
- 40% - 60%
- 60% - 80%
- 80% - 100%

**Map 4E**



**Report MHL2571**

Northern Lakes Floodplain  
Risk Management Study &  
Plan

